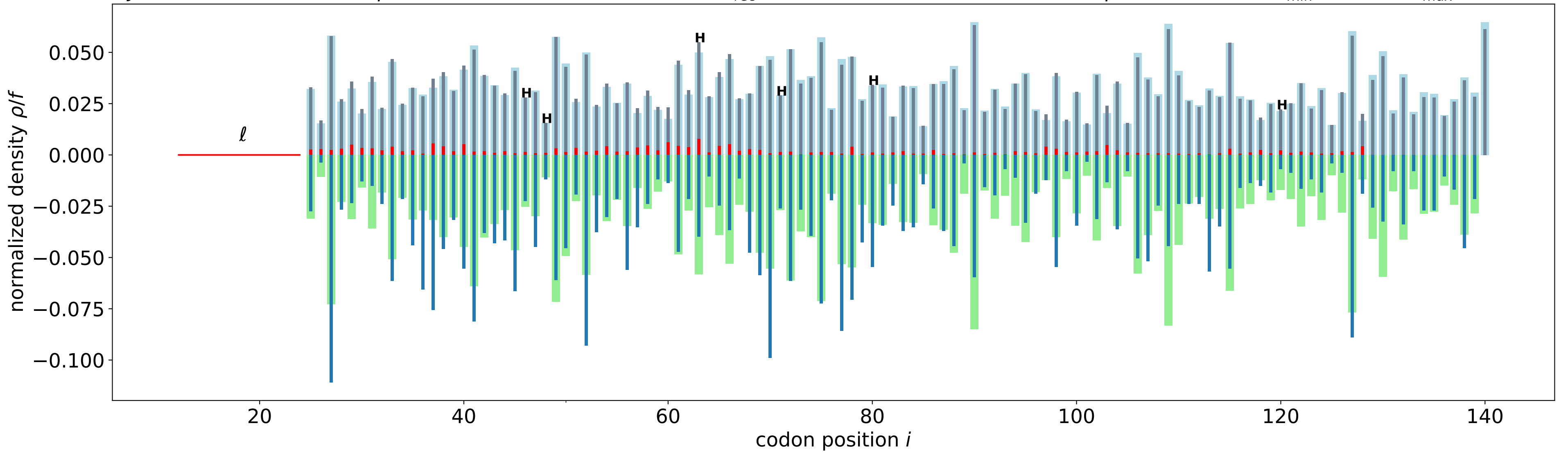


# YJR104C

Jan1,  $\alpha=0.063010(0.10)$ ,  $\beta=0.630097(1.00)$ ,  $\ell=12$ ,  $\Delta t=500$ ,  $n_{rec}/N=1000$ ,  $N=116$ ,  $f=0.038653192$ ,  $\bar{\rho}=0.398\pm 0.130$ ,  $\lambda_{min}=0.6301$ ,  $\lambda_{max}=2.9336$



3AT,  $\alpha=0.063010(0.10)$ ,  $\beta=0.630097(1.00)$ ,  $\ell=12$ ,  $\Delta t=500$ ,  $n_{rec}/N=1000$ ,  $N=116$ ,  $f=0.028457571$ ,  $\bar{\rho}=0.499\pm 0.088$ ,  $\lambda_{min}=0.1677$ ,  $\lambda_{max}=6.3184$

