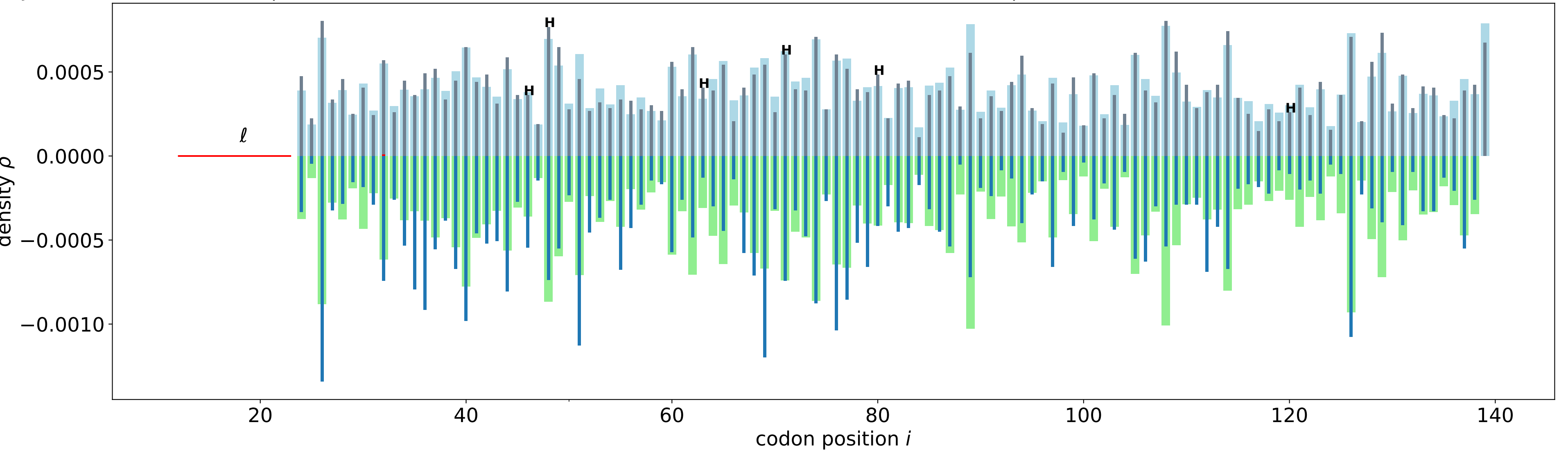


# YJR104C

Jan1,  $\alpha=0.000489(1.00)$ ,  $\beta=0.626870(1.00)$ ,  $\ell=12$ ,  $\Delta t=4000$ ,  $n_{rec}/N=1000$ ,  $N=116$ ,  $f=0.000421516$ ,  $\bar{\rho}=0.005\pm 0.022$ ,  $\lambda_{min}=0.6301$ ,  $\lambda_{max}=2.9336$ ,  $r=0.7045(0.7626)$



3AT,  $\alpha=0.012537(1.00)$ ,  $\beta=0.626870(1.00)$ ,  $\ell=12$ ,  $\Delta t=398$ ,  $n_{rec}/N=100$ ,  $N=116$ ,  $f=0.011996995$ ,  $\bar{\rho}=0.164\pm 0.120$ ,  $\lambda_{min}=0.1677$ ,  $\lambda_{max}=6.3184$ ,  $r=0.6993(0.7407)$

