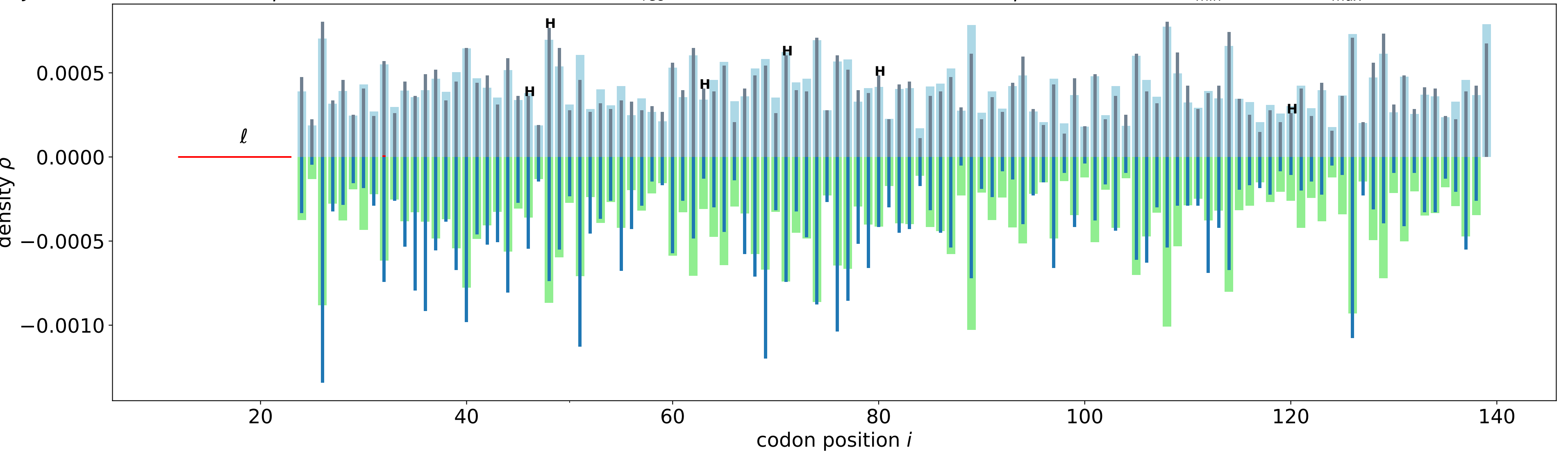


# YJR104C

Jan1,  $\alpha=0.000489(1.00)$ ,  $\beta=0.626870(1.00)$ ,  $\ell=12$ ,  $\Delta t=4000$ ,  $n_{rec}/N=1000$ ,  $N=116$ ,  $f=0.000421516$ ,  $\bar{\rho}=0.005\pm 0.022$ ,  $\lambda_{min}=0.6301$ ,  $\lambda_{max}=2.9336$ ,  $r=0.7045(0.7626)$



3AT,  $\alpha=0.000476(1.00)$ ,  $\beta=0.626870(1.00)$ ,  $\ell=12$ ,  $\Delta t=5000$ ,  $n_{rec}/N=1000$ ,  $N=116$ ,  $f=0.000443132$ ,  $\bar{\rho}=0.007\pm 0.026$ ,  $\lambda_{min}=0.1677$ ,  $\lambda_{max}=6.3184$ ,  $r=0.7010(0.7407)$

