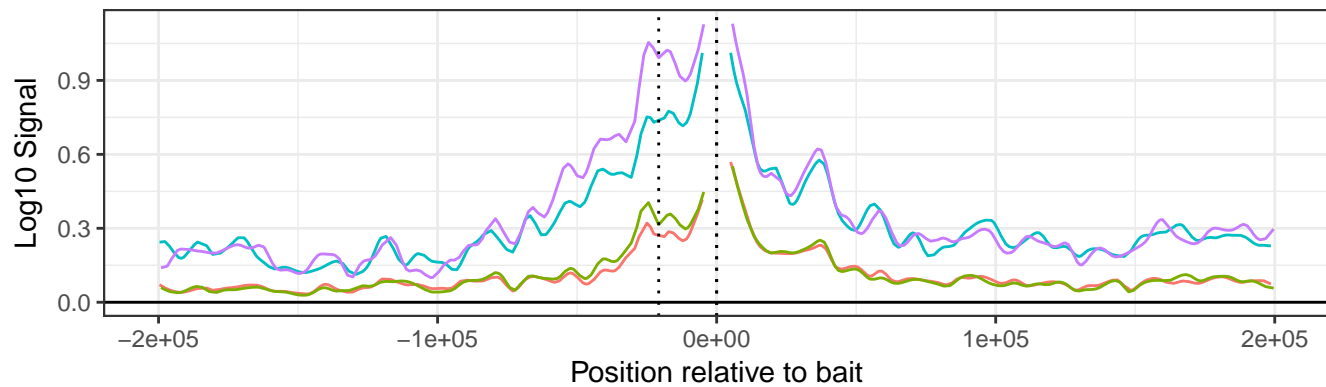
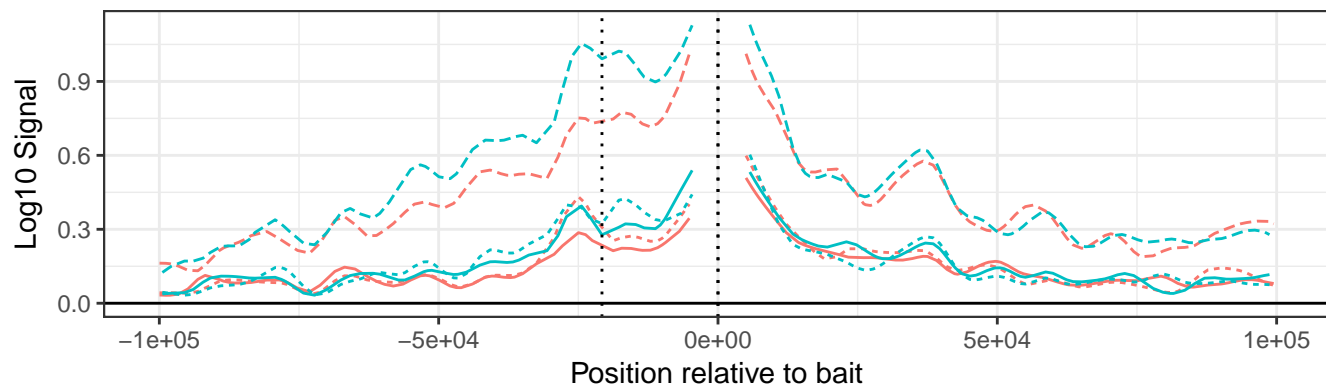


Batch 1 (ZT20, ZT08) with Batch 3 (LiverWT and IntronKO means)



time — Liver_Cry1IntronKO — Liver_WT — ZT08 — ZT20

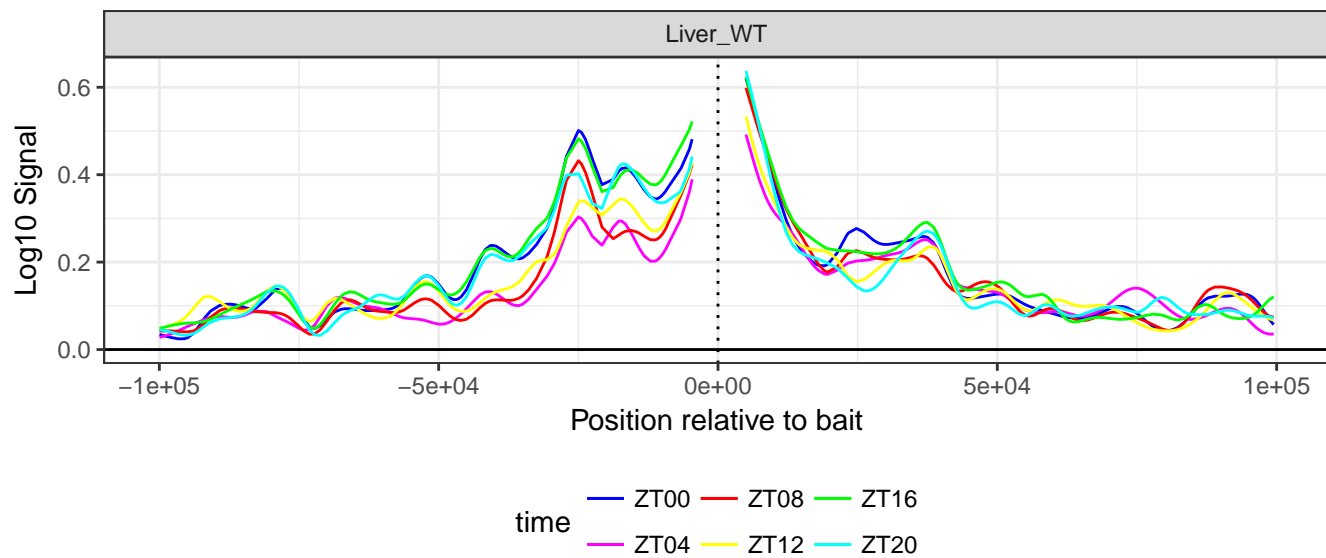
ZT08 vs ZT20 all batches

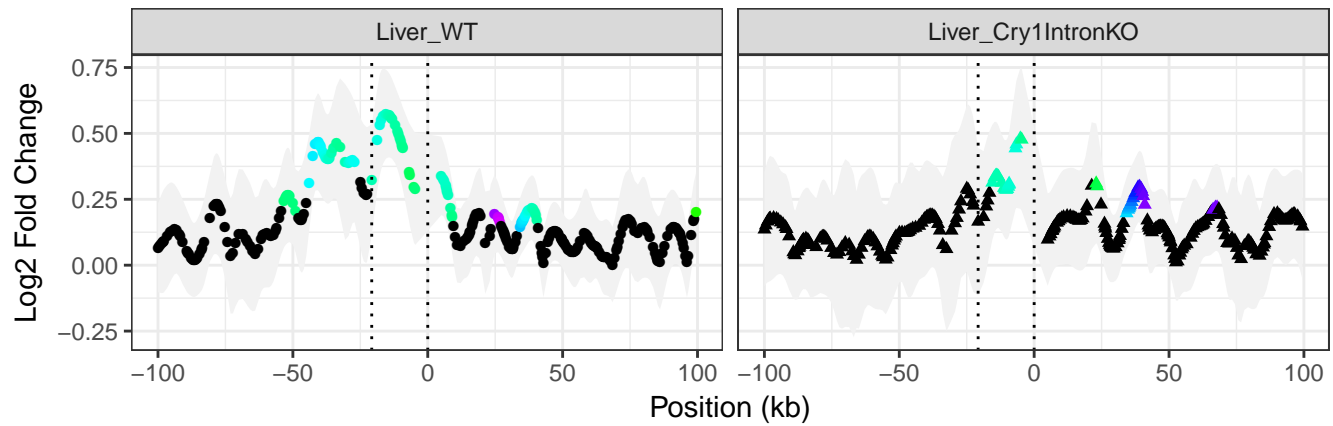


time — ZT08 — ZT20

genotype — Liver_Cry1IntronKO Liver_WT - - - WT

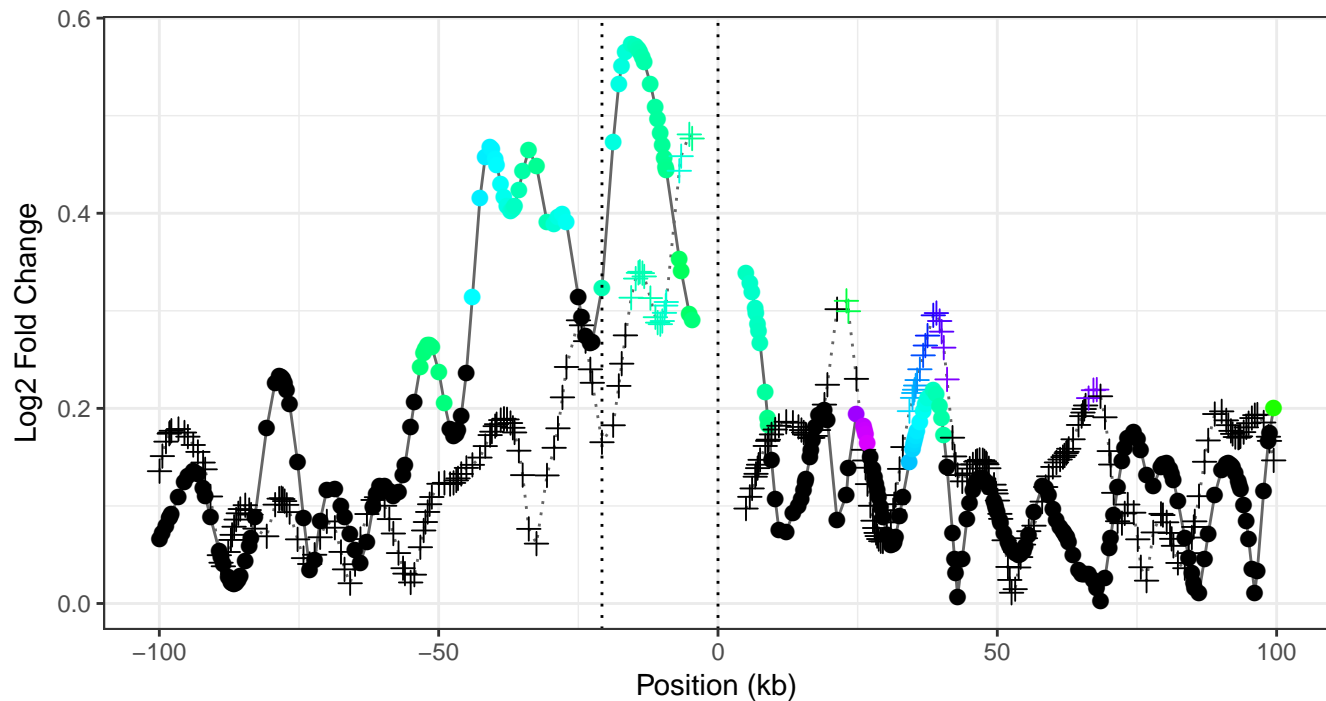
Cry1 Around the Clock





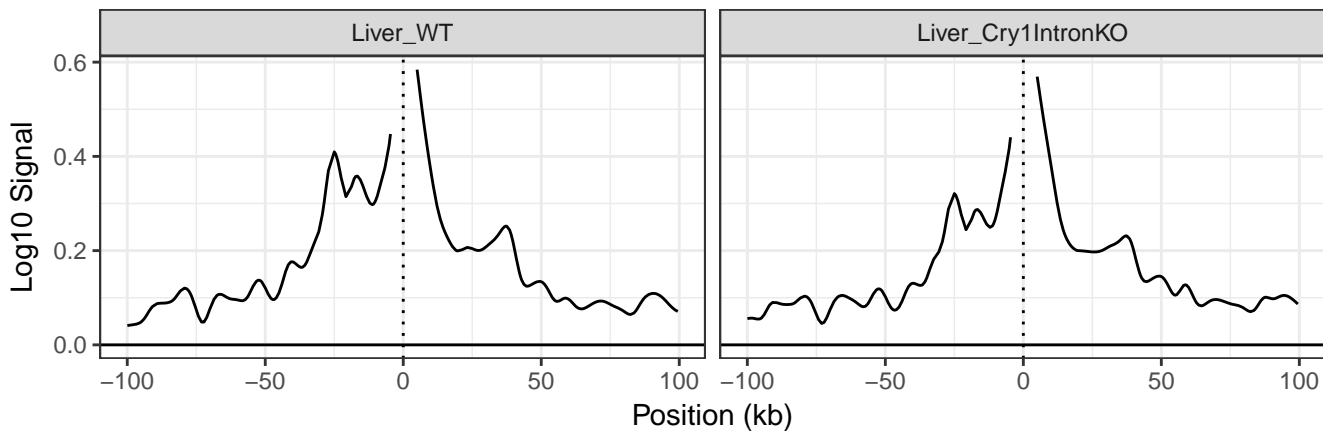
tissue • Liver_WT ▲ Liver_Cry1IntronKO

Amplitudes



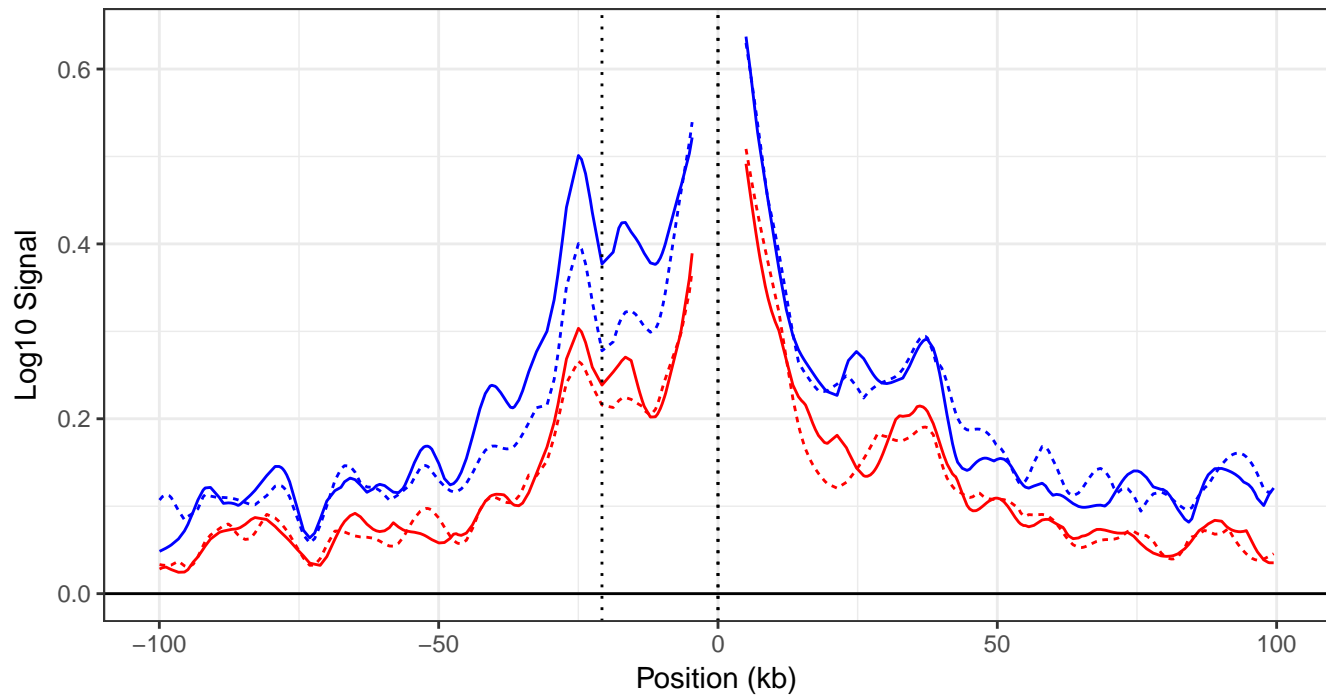
tissue ● Liver_WT + Liver_Cry1IntronKO

Cry1 Around the Clock



time — ZTmean

Max and min of 4C signal



time

Liver_WT

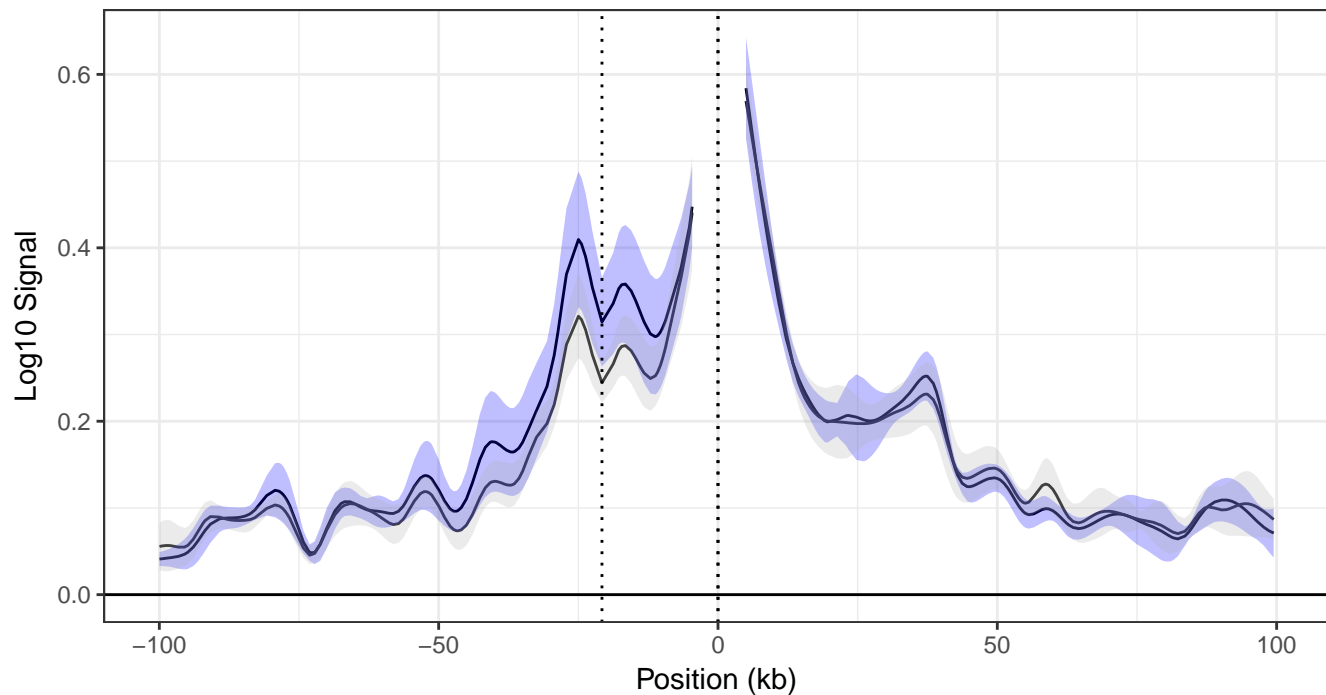
Liver_Cry1IntronKO

genotype

— Liver_WT

- - - Liver_Cry1IntronKO

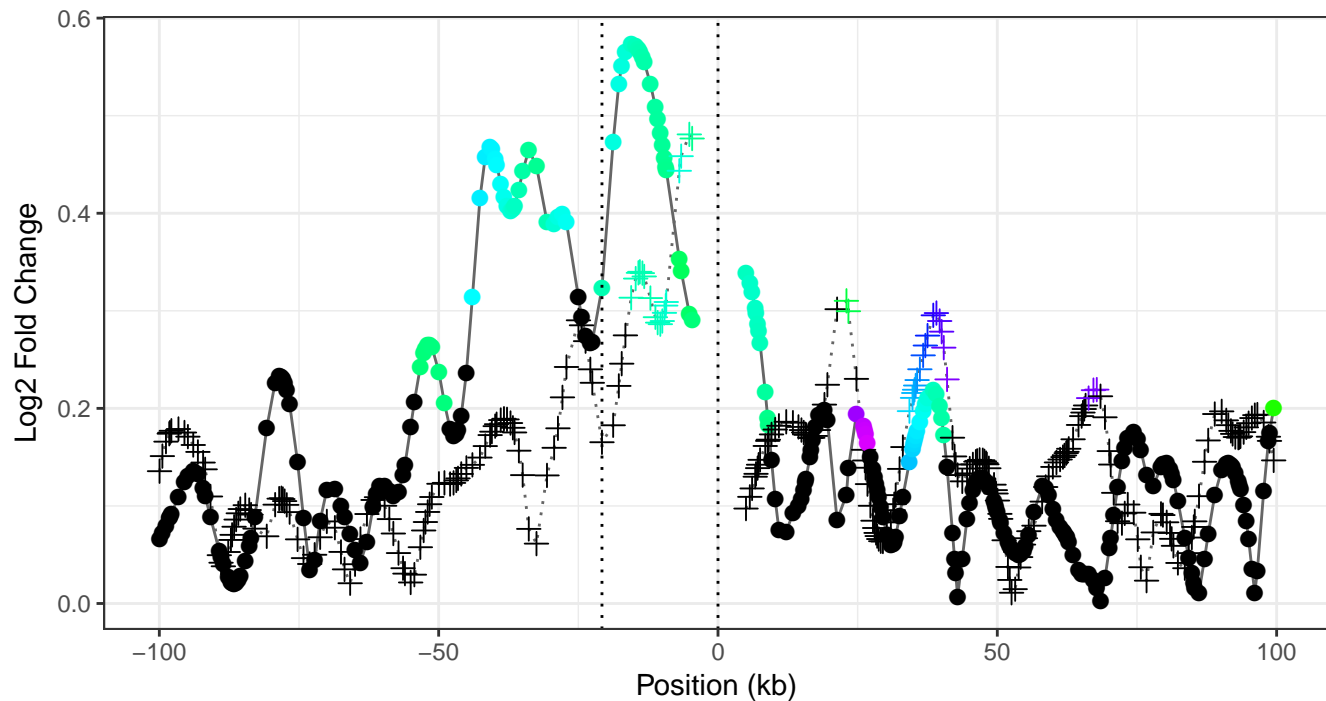
Mean log10 4C signal



time — Liver_WT — Liver_Cry1IntronKO

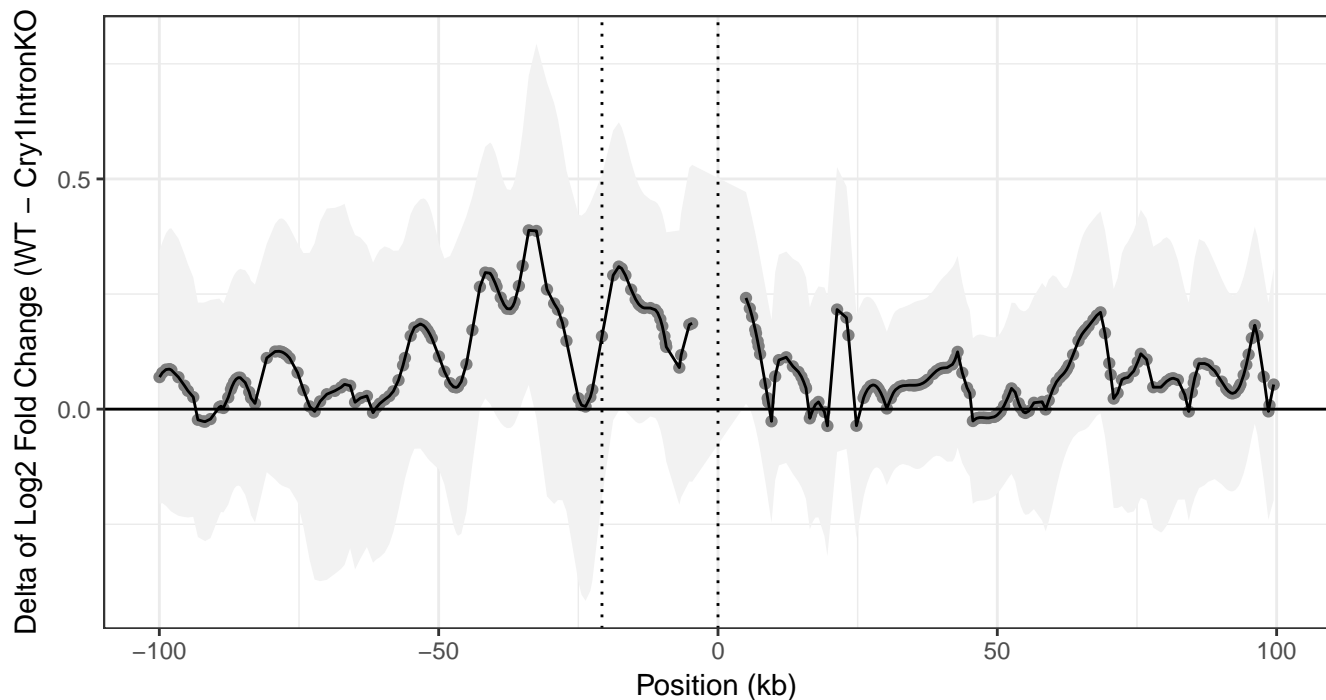
genotype ■ Liver_WT ■ Liver_Cry1IntronKO

Amplitudes

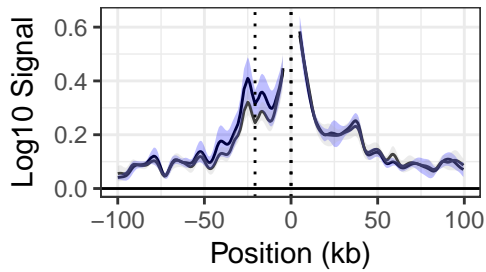


tissue ● Liver_WT + Liver_Cry1IntronKO

Delta of Amplitudes (WT – Cry1IntronKO)

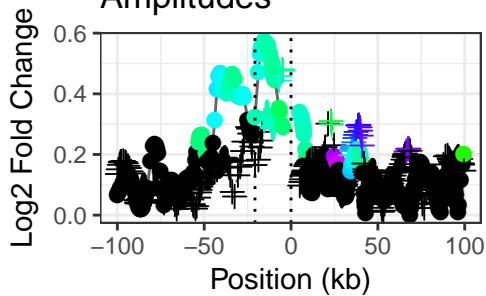


Mean log10 4C signal



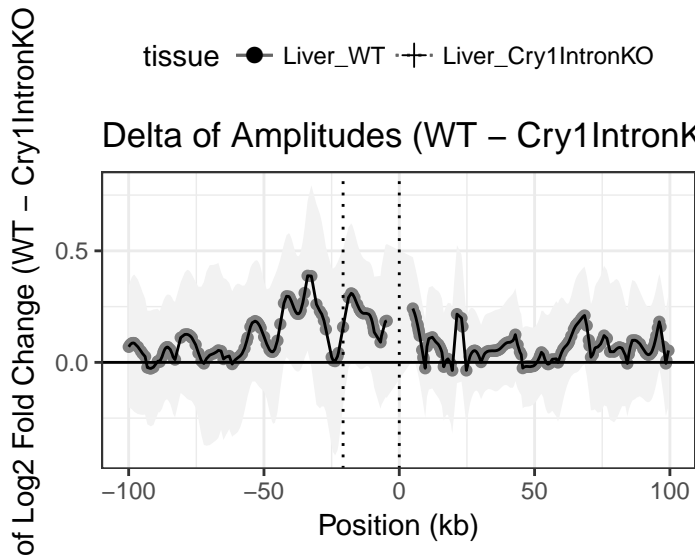
time — Liver_WT — Liver_Cry1IntronKO genotype ■ Liver_WT ■ Liver_Cry1IntronKO

Amplitudes

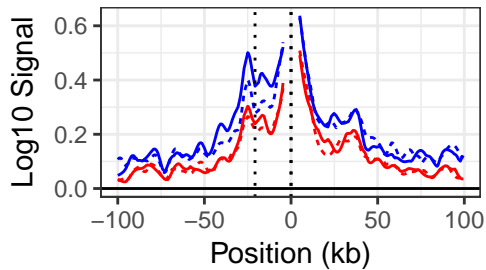


tissue ● Liver_WT + Liver_Cry1IntronKO

Delta of Amplitudes (WT – Cry1IntronKO)

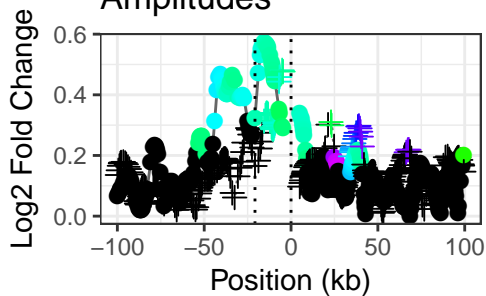


Max and min of 4C signal



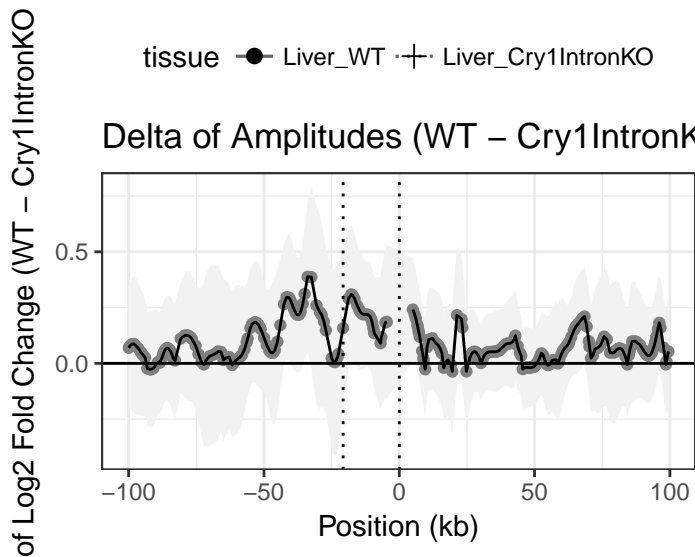
time Liver_WT Liver_Cry1IntronKO genotype — Liver_WT - - - Liver_Cry1IntronKO

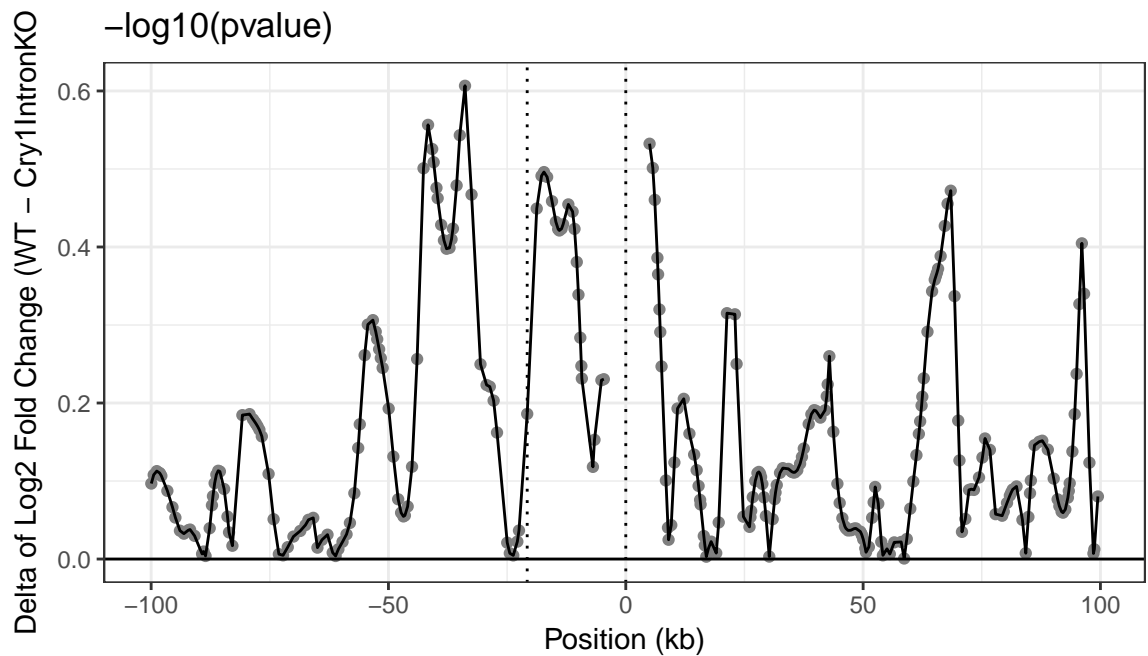
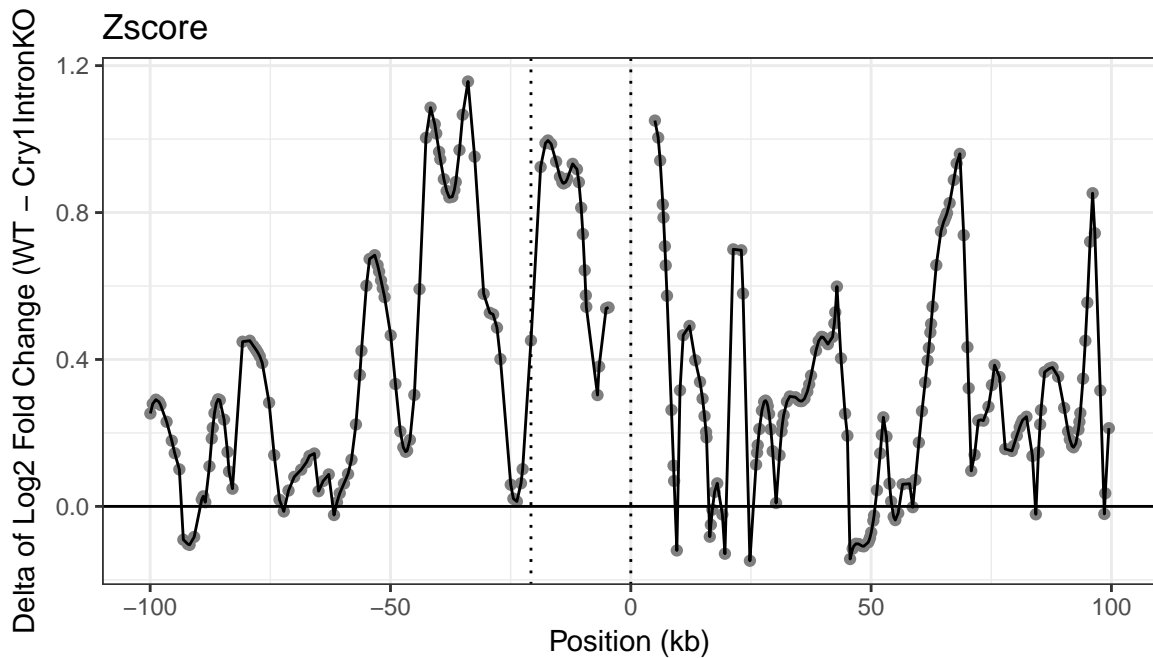
Amplitudes

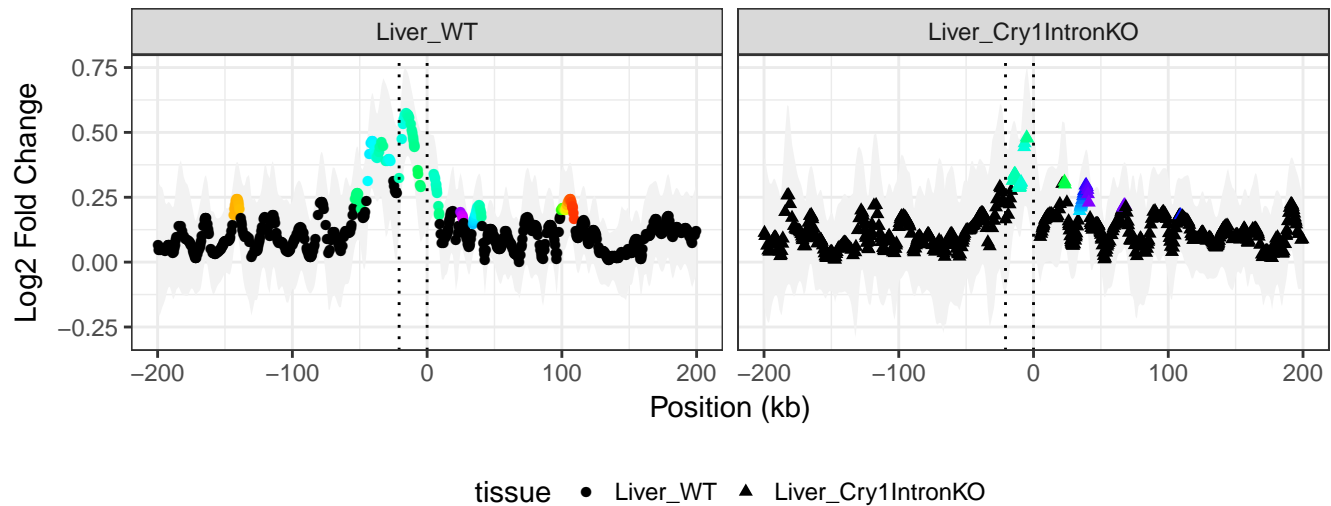


tissue ● Liver_WT + Liver_Cry1IntronKO

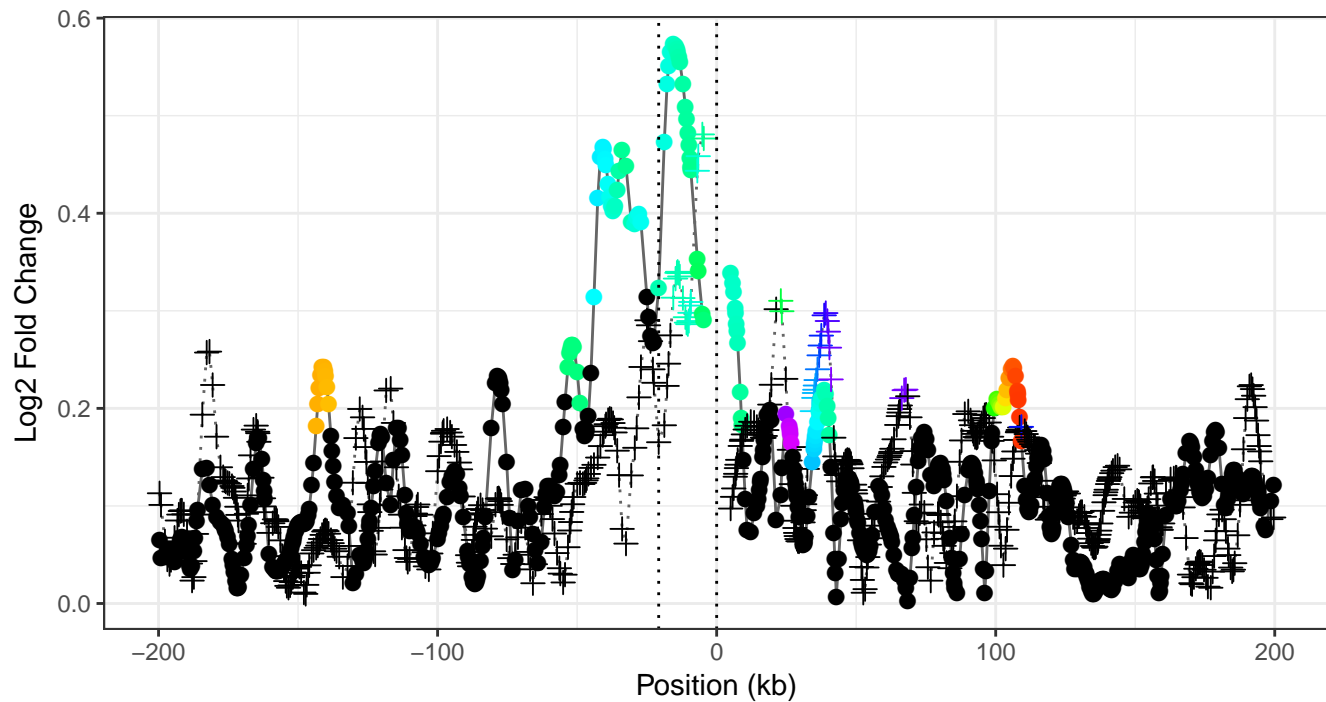
Delta of Amplitudes (WT – Cry1IntronKO)





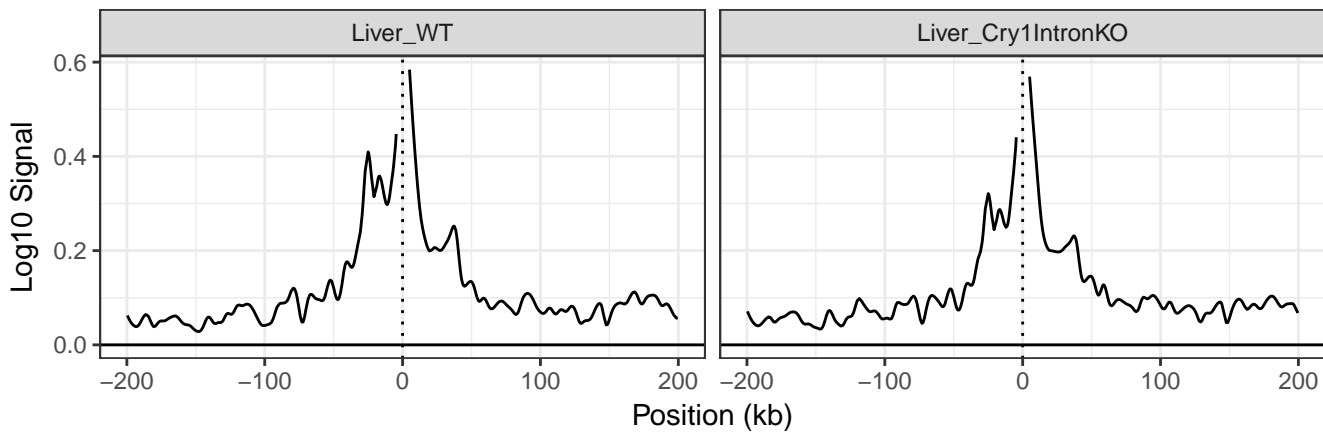


Amplitudes



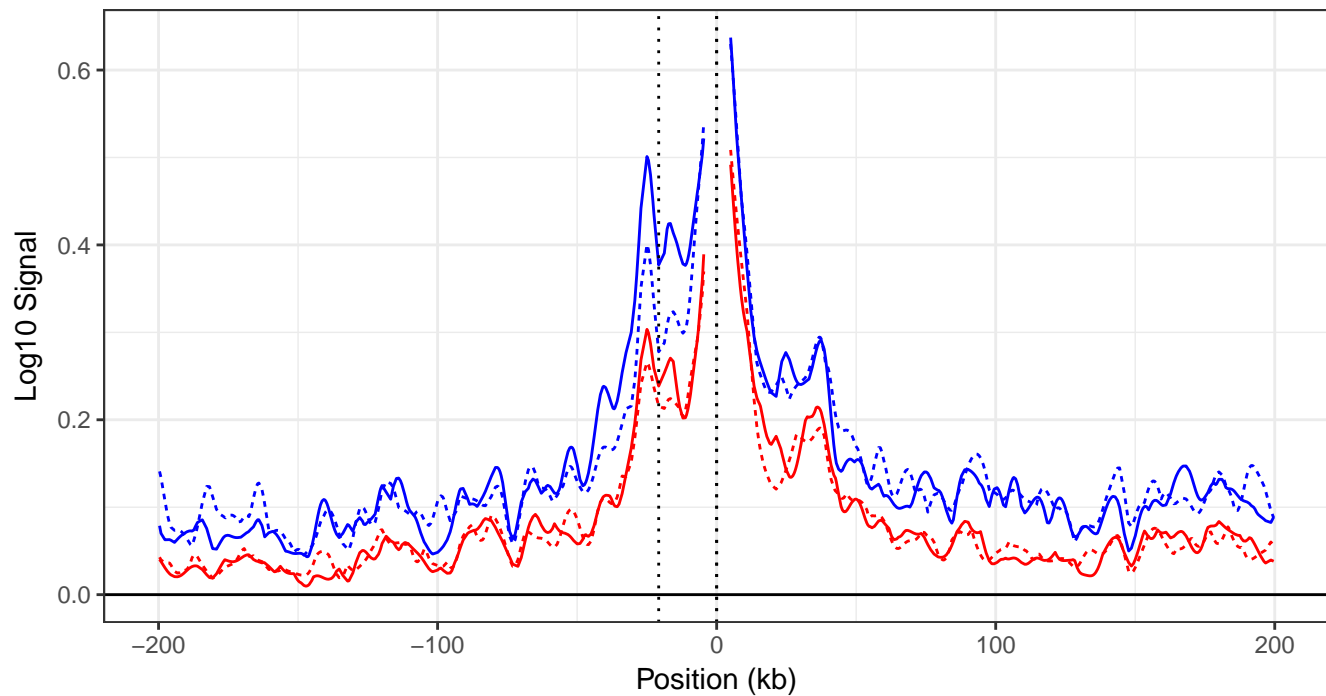
tissue ● Liver_WT + Liver_Cry1IntronKO

Cry1 Around the Clock



time — ZTmean

Max and min of 4C signal



time

Liver_WT

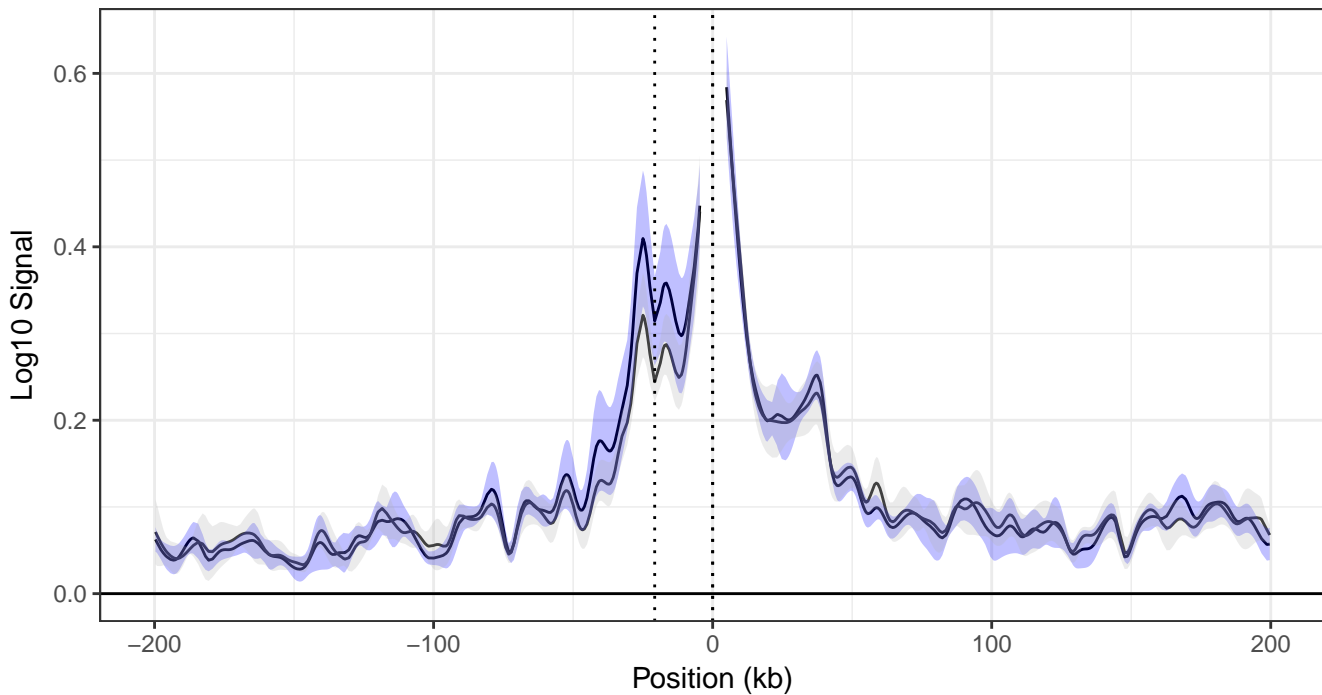
Liver_Cry1IntronKO

genotype

— Liver_WT

- - - Liver_Cry1IntronKO

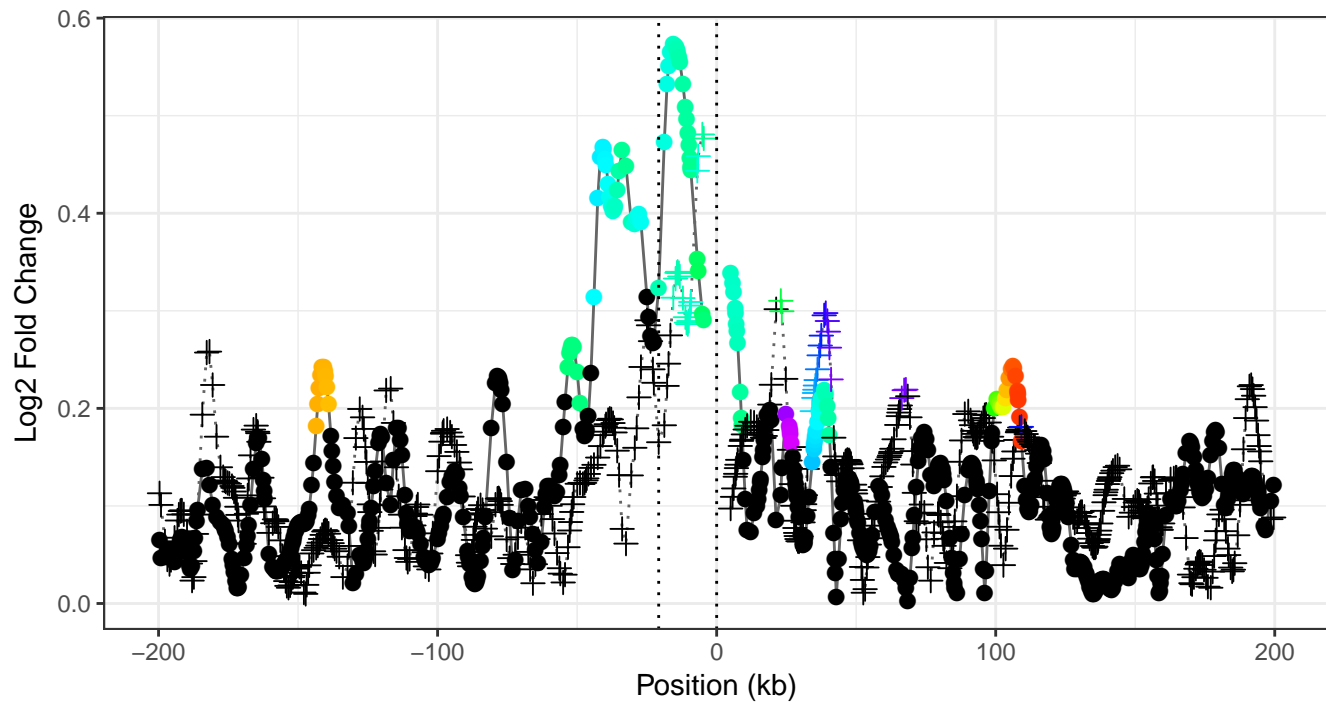
Mean log10 4C signal



time — Liver_WT — Liver_Cry1IntronKO

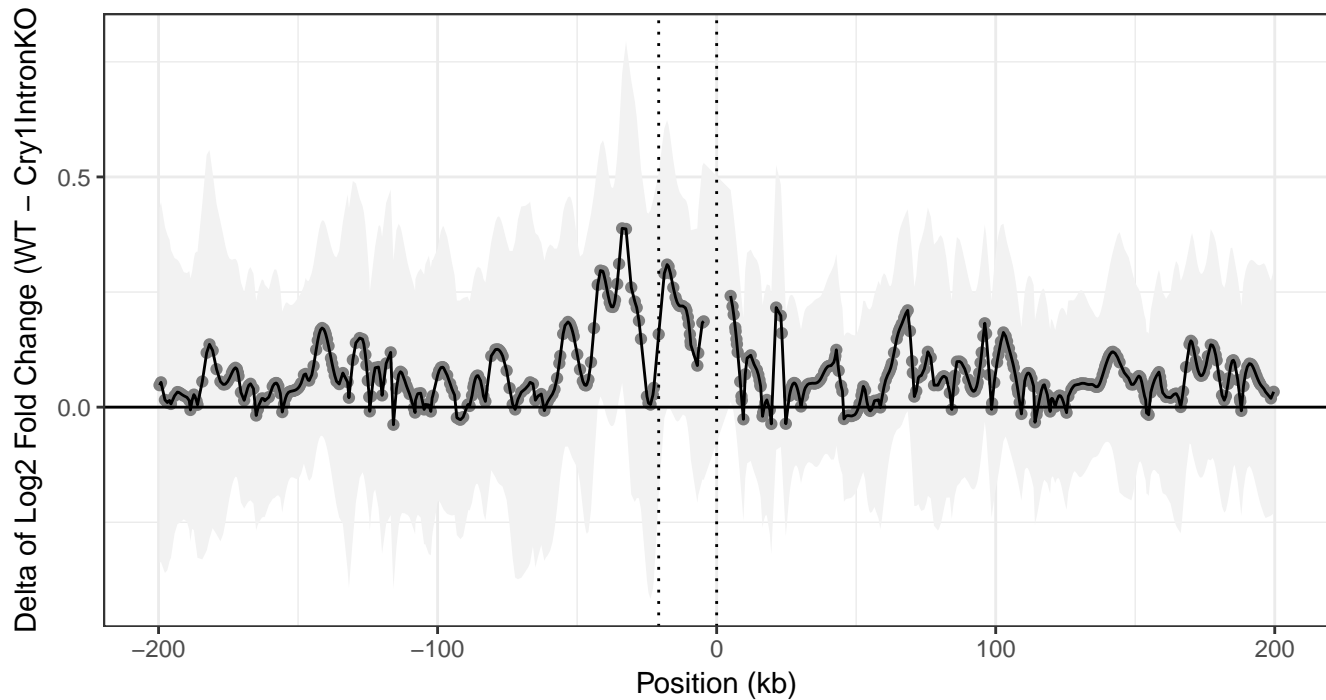
genotype ■ Liver_WT ■ Liver_Cry1IntronKO

Amplitudes

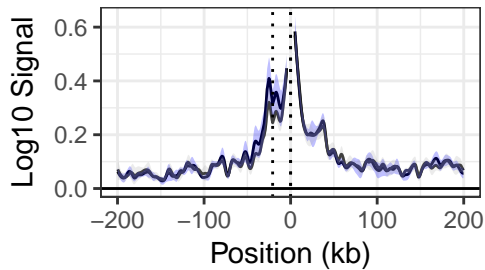


tissue ● Liver_WT + Liver_Cry1IntronKO

Delta of Amplitudes (WT - Cry1IntronKO)

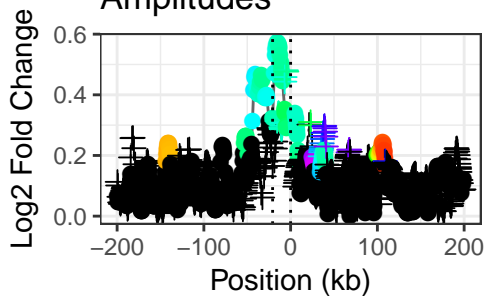


Mean log10 4C signal



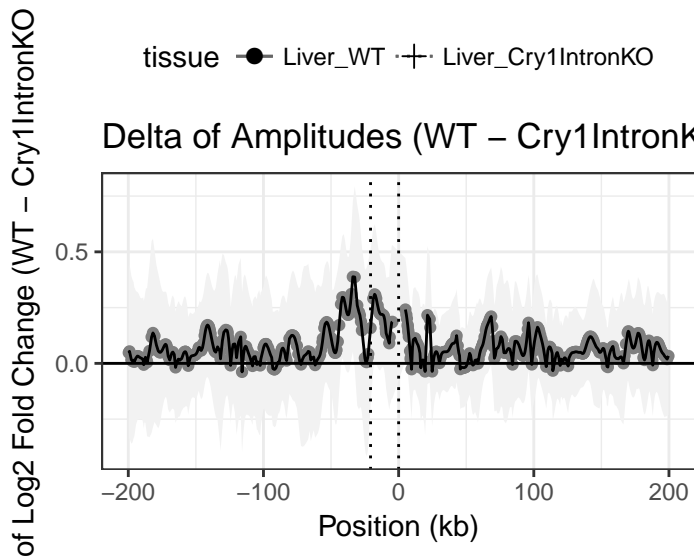
time — Liver_WT — Liver_Cry1IntronKO genotype ■ Liver_WT ■ Liver_Cry1IntronKO

Amplitudes

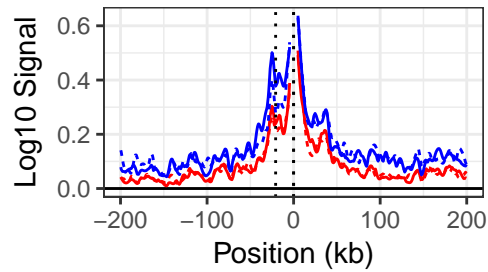


tissue ● Liver_WT + Liver_Cry1IntronKO

Delta of Amplitudes (WT – Cry1IntronKO)

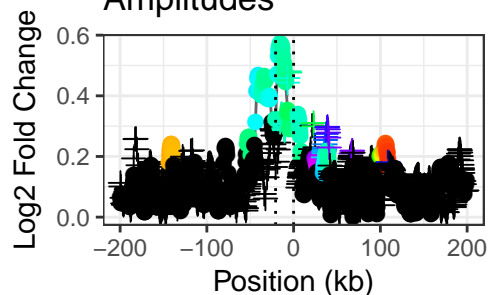


Max and min of 4C signal



time Liver_WT Liver_Cry1IntronKO genotype — Liver_WT - - - Liver_Cry1IntronKO

Amplitudes



tissue ● Liver_WT + Liver_Cry1IntronKO

Delta of Amplitudes (WT - Cry1IntronKO)

