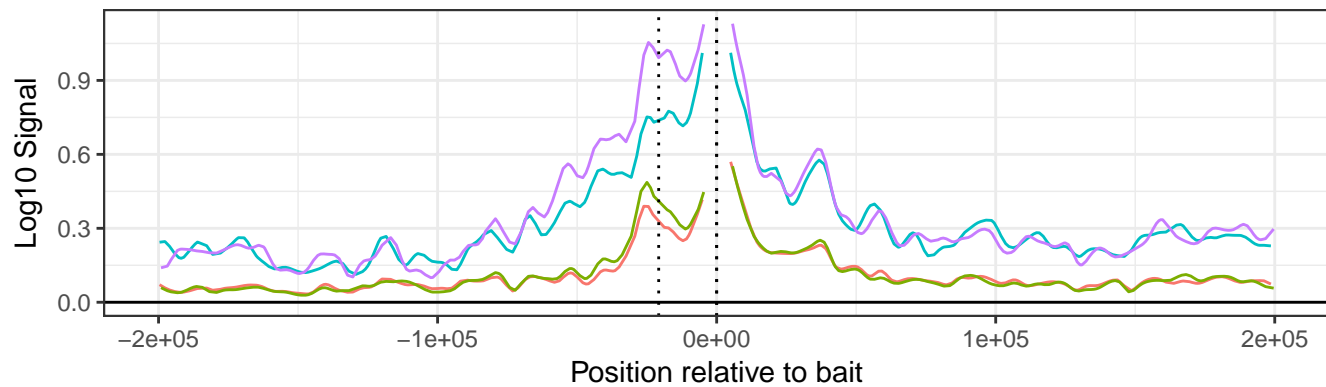
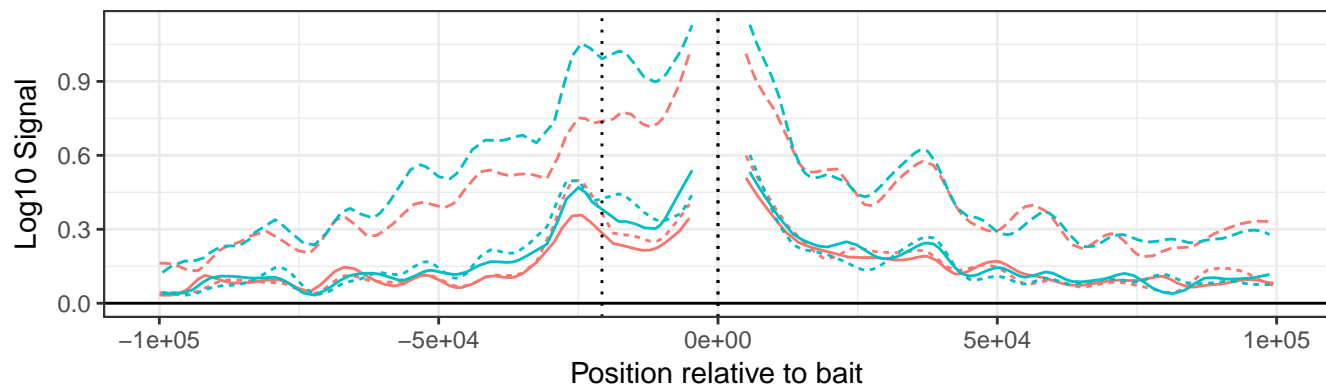


Batch 1 (ZT20, ZT08) with Batch 3 (LiverWT and IntronKO means)



time — Liver\_Cry1IntronKO — Liver\_WT — ZT08 — ZT20

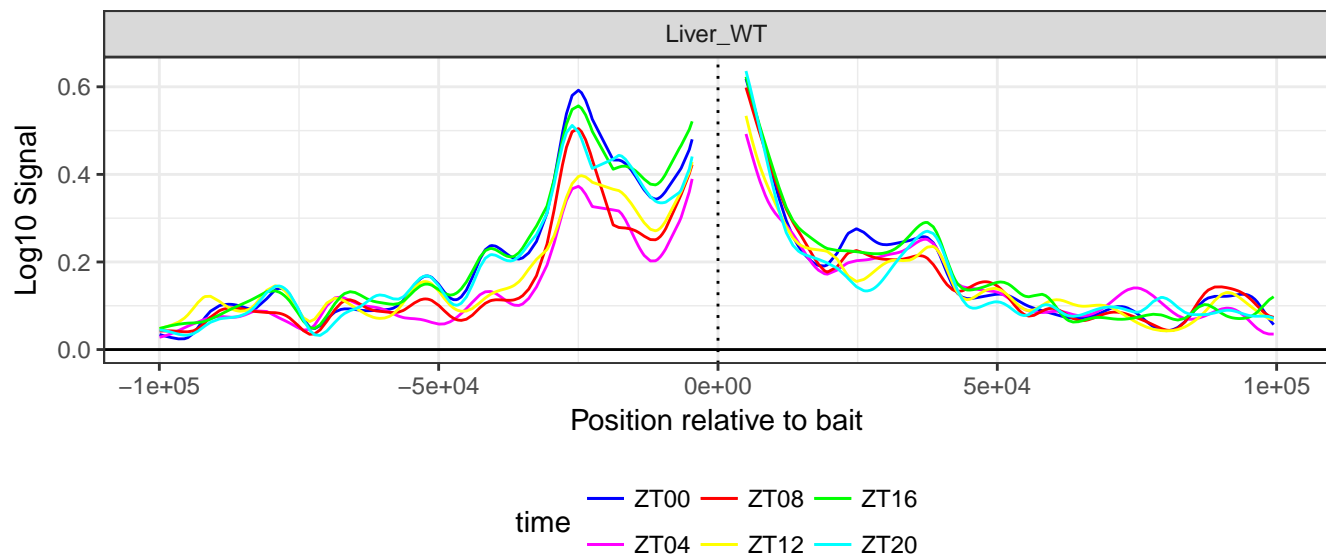
## ZT08 vs ZT20 all batches

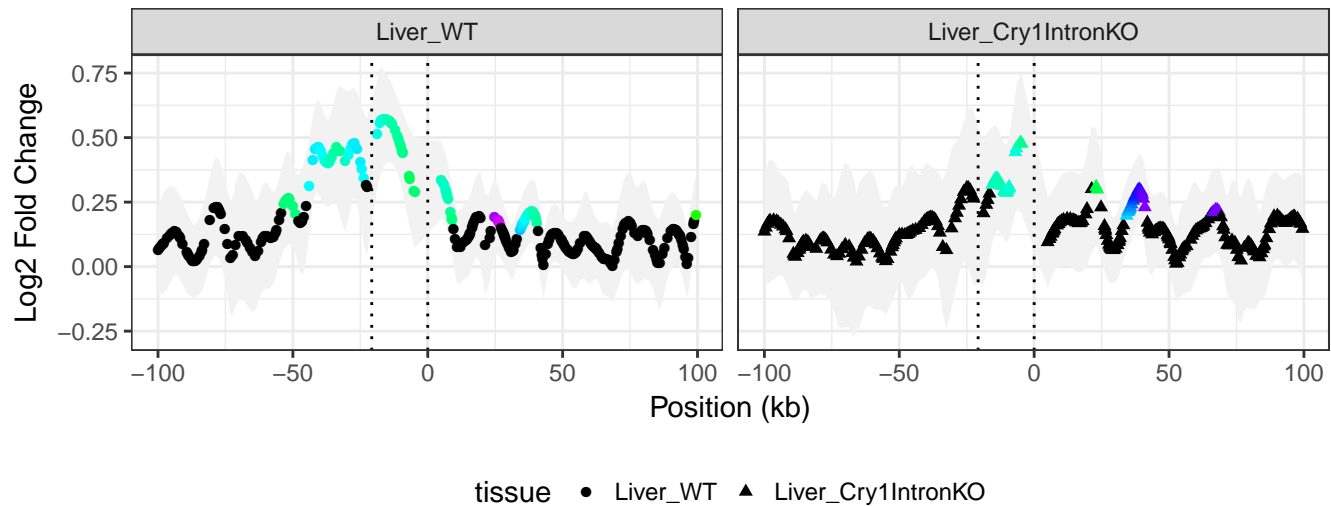


time — ZT08 — ZT20

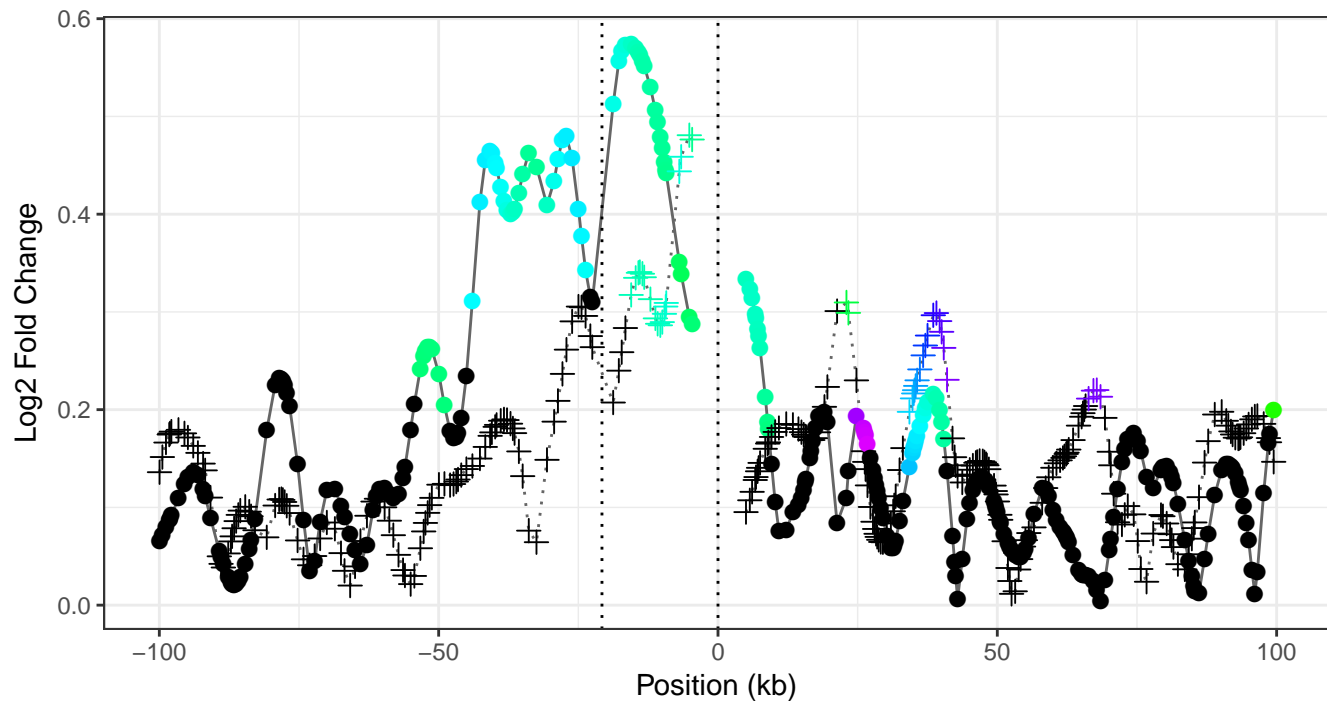
genotype — Liver\_Cry1IntronKO ··· Liver\_WT - - - WT

## Cry1 Around the Clock



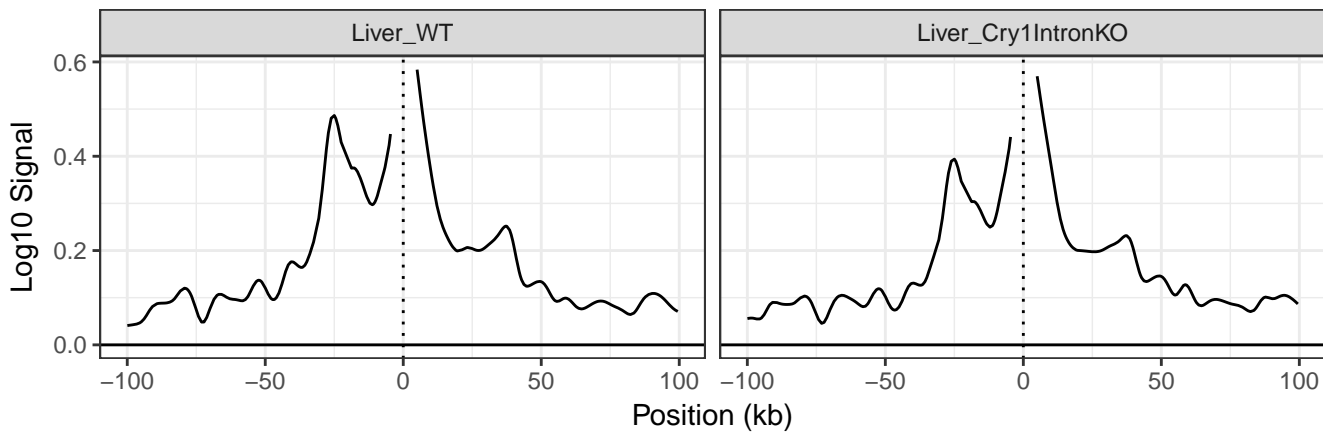


# Amplitudes



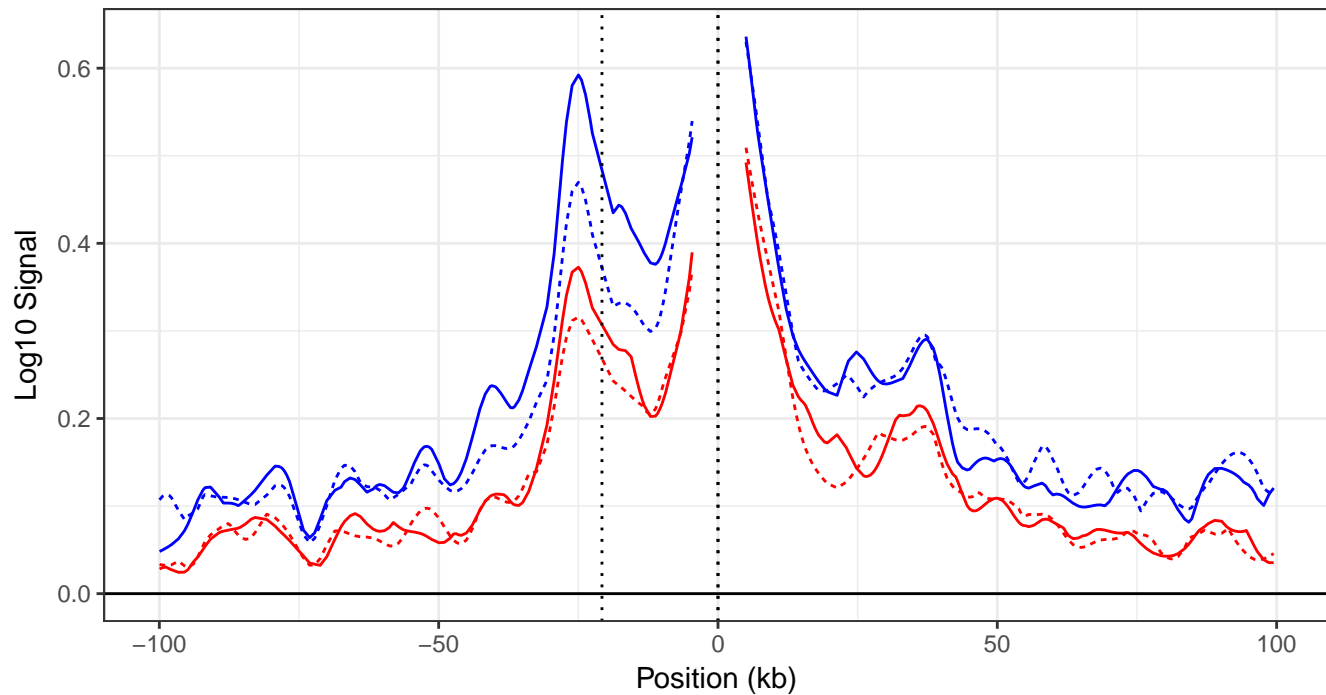
tissue ● Liver\_WT + Liver\_Cry1IntronKO

## Cry1 Around the Clock



time — ZTmean

### Max and min of 4C signal



time

Liver\_WT

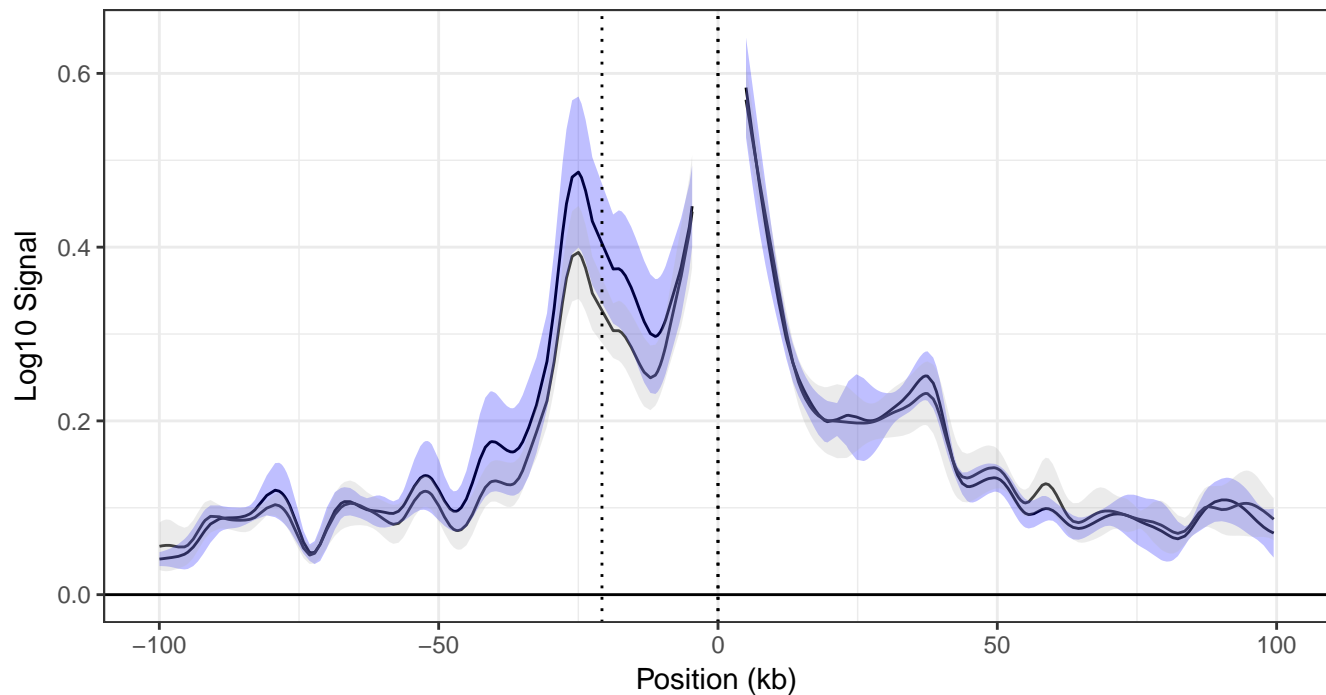
Liver\_Cry1IntronKO

genotype

— Liver\_WT

- - - Liver\_Cry1IntronKO

# Mean log10 4C signal

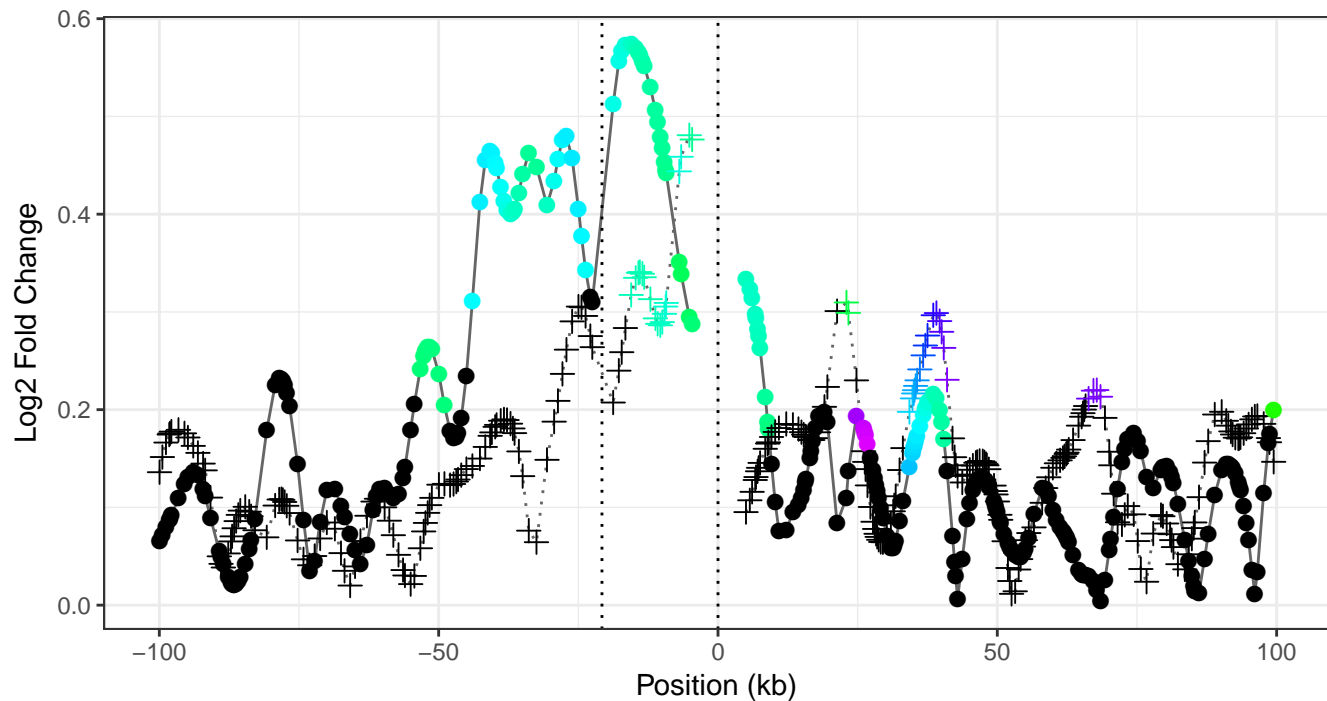


time — Liver\_WT — Liver\_Cry1IntronKO

genotype ■ Liver\_WT ■ Liver\_Cry1IntronKO

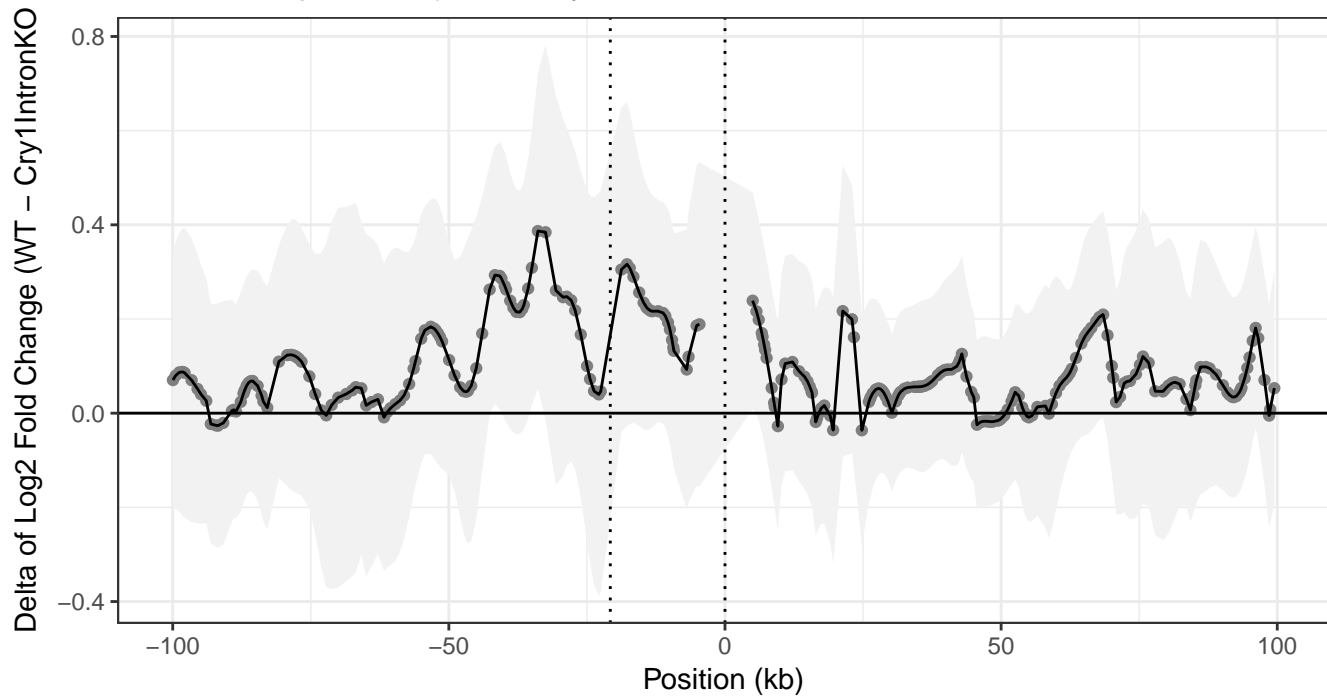


# Amplitudes

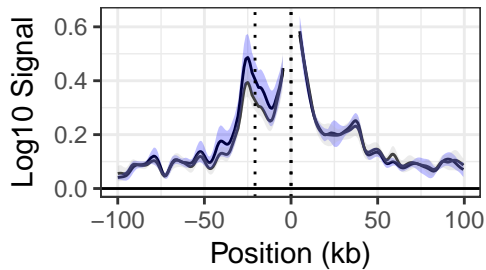


tissue ● Liver\_WT + Liver\_Cry1IntronKO

Delta of Amplitudes (WT – Cry1IntronKO)

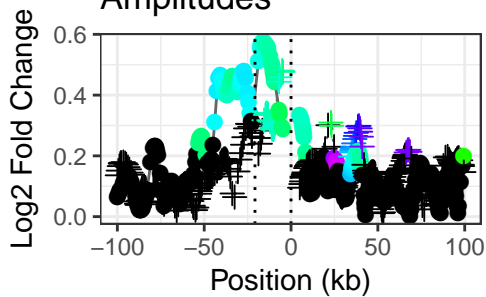


### Mean log10 4C signal



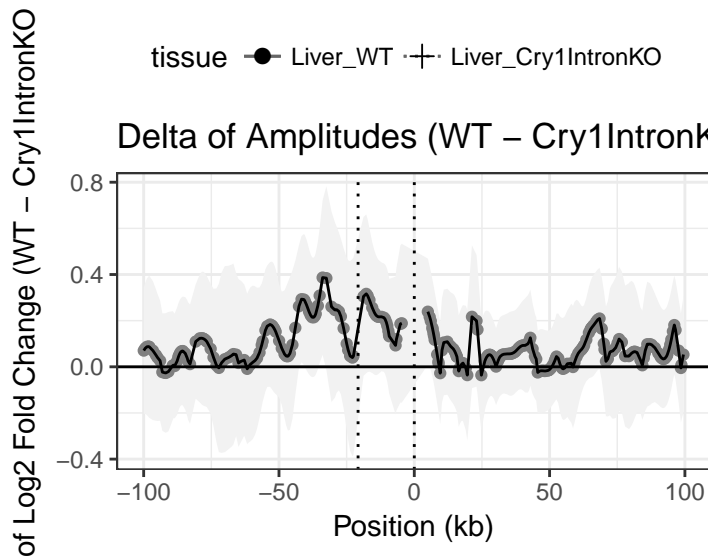
time — Liver\_WT — Liver\_Cry1IntronKO genotype ■ Liver\_WT ■ Liver\_Cry1IntronKO

### Amplitudes

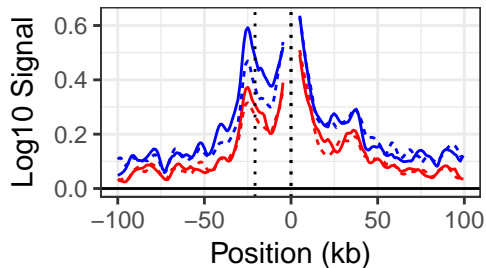


tissue ● Liver\_WT + Liver\_Cry1IntronKO

### Delta of Amplitudes (WT - Cry1IntronKO)

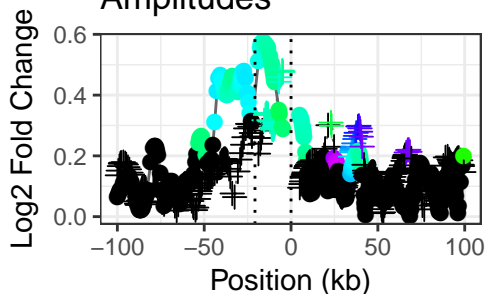


### Max and min of 4C signal



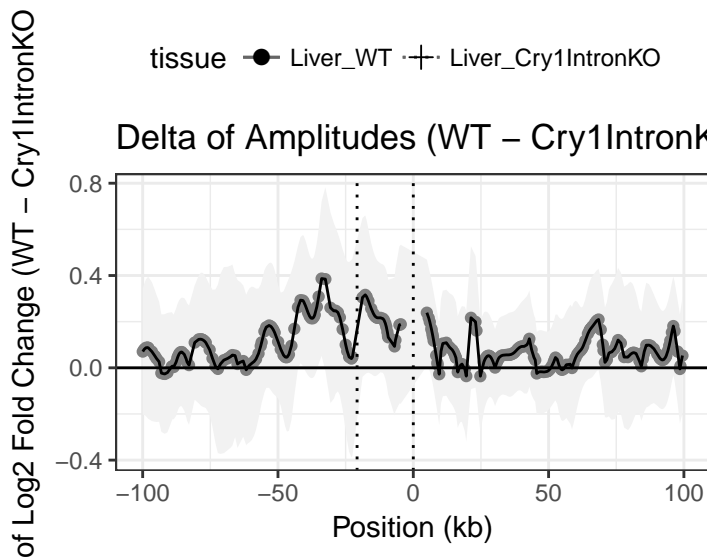
time      Liver\_WT      Liver\_Cry1IntronKO      genotype      — Liver\_WT      ··· Liver\_Cry1IntronKO

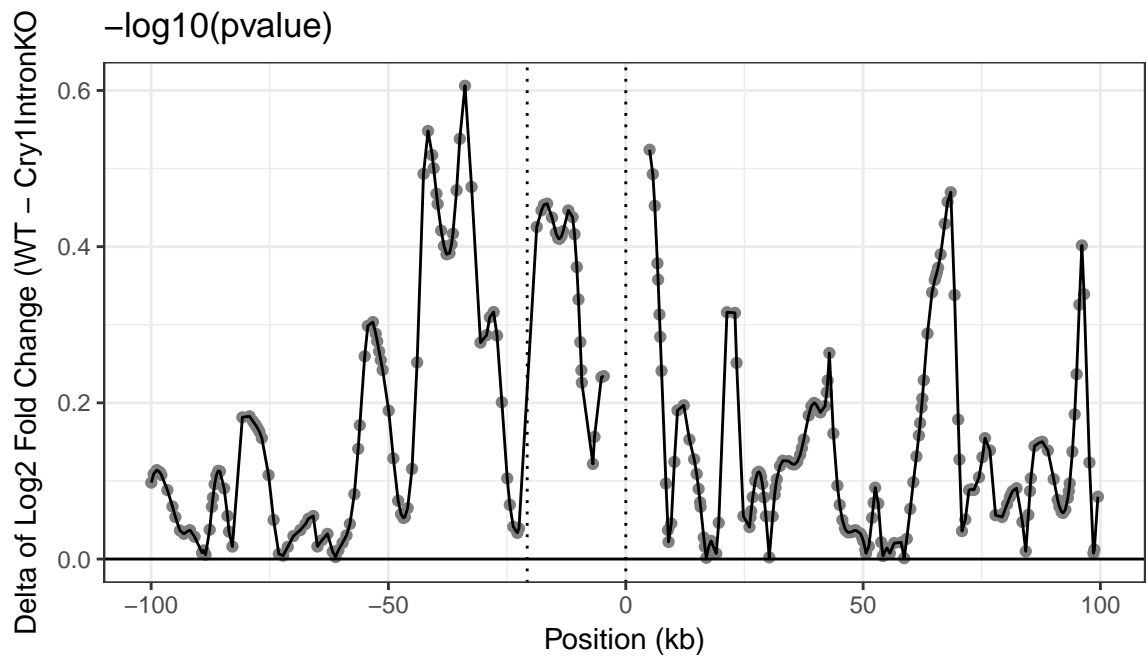
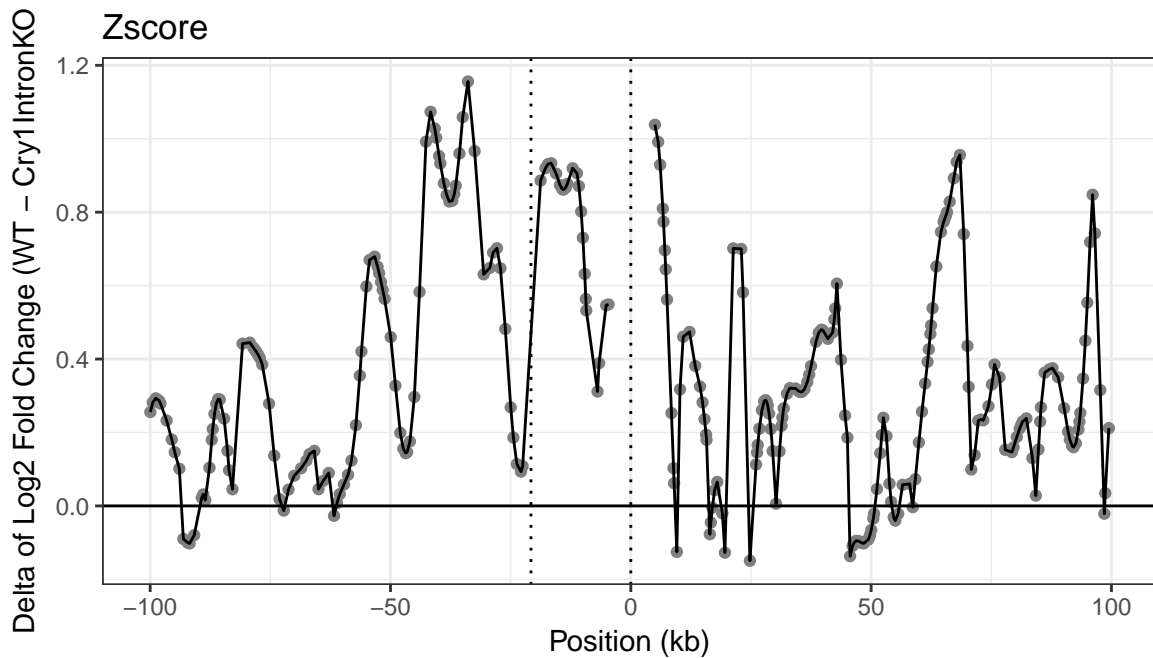
### Amplitudes

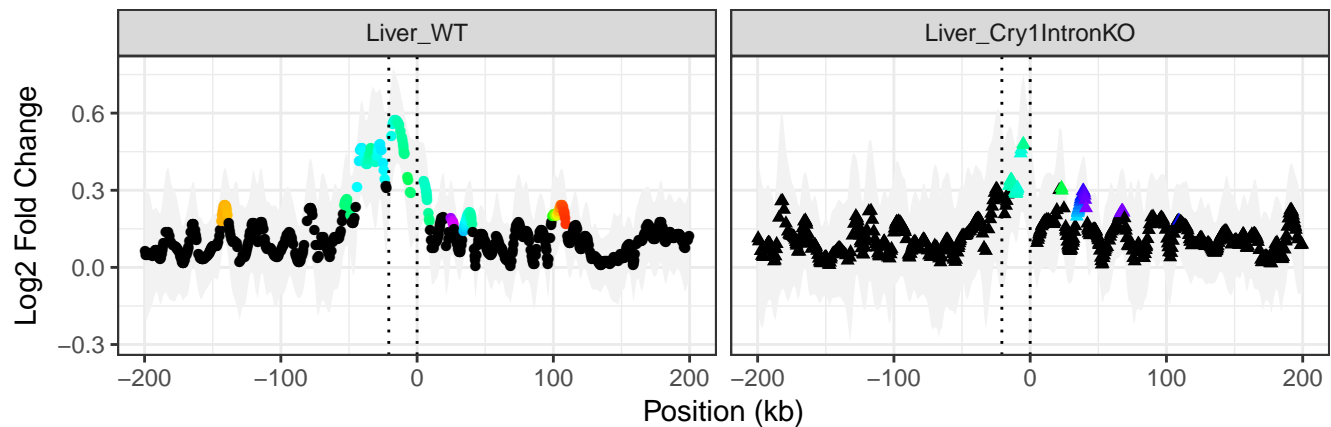


tissue      ● Liver\_WT      + Liver\_Cry1IntronKO

### Delta of Amplitudes (WT - Cry1IntronKO)

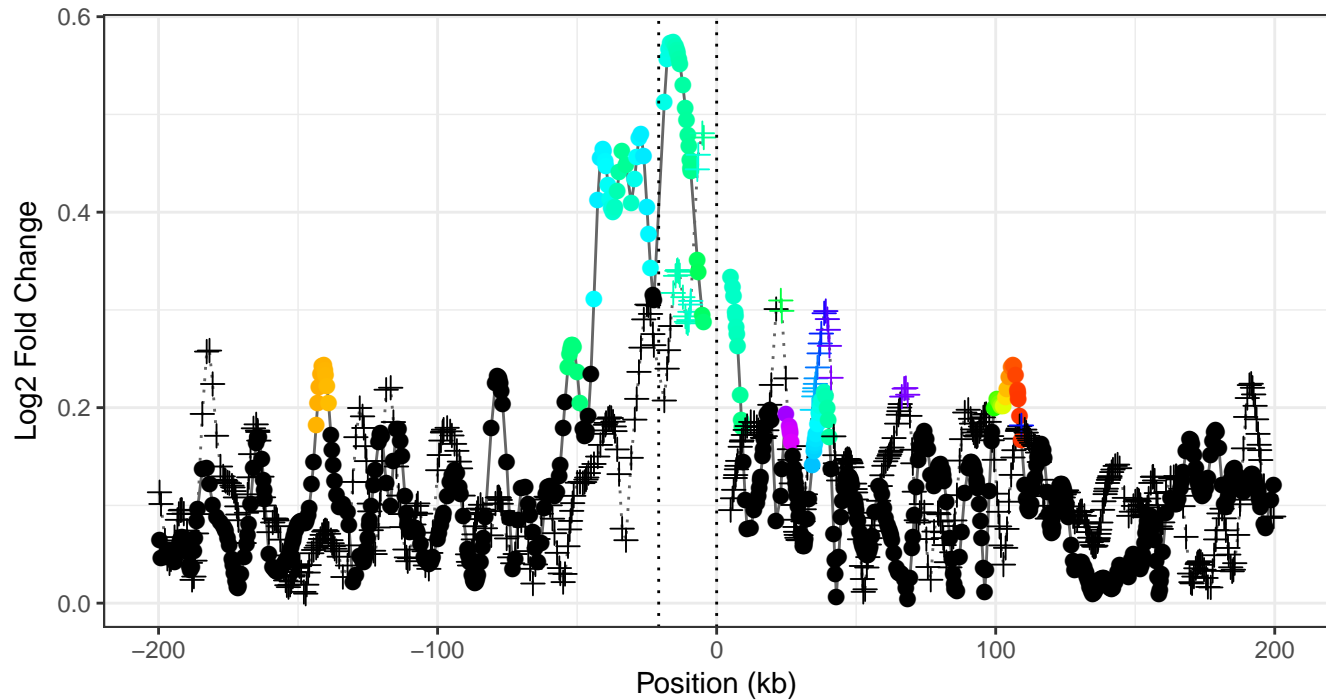






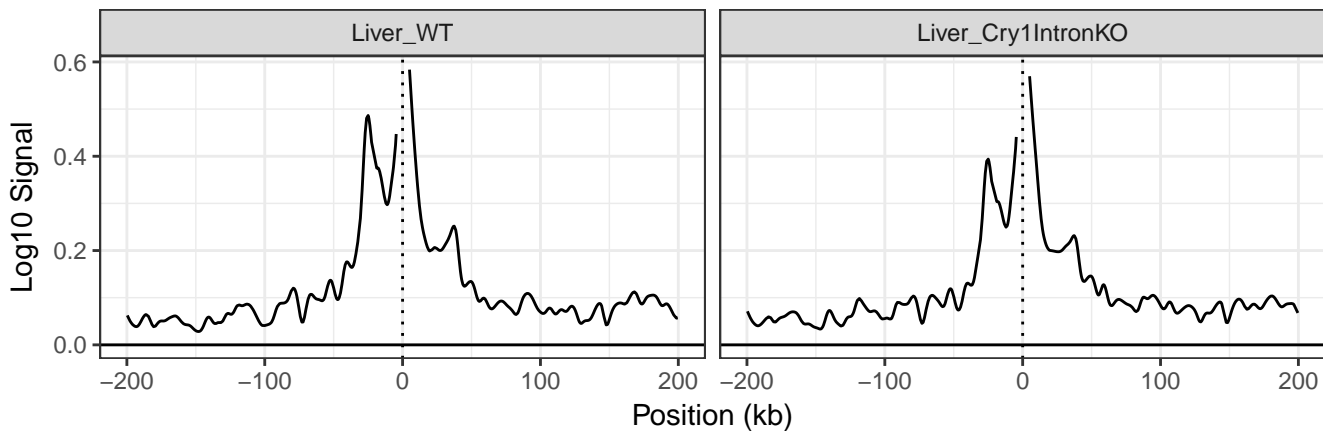
tissue • Liver\_WT ▲ Liver\_Cry1IntronKO

# Amplitudes



tissue ● Liver\_WT + Liver\_Cry1IntronKO

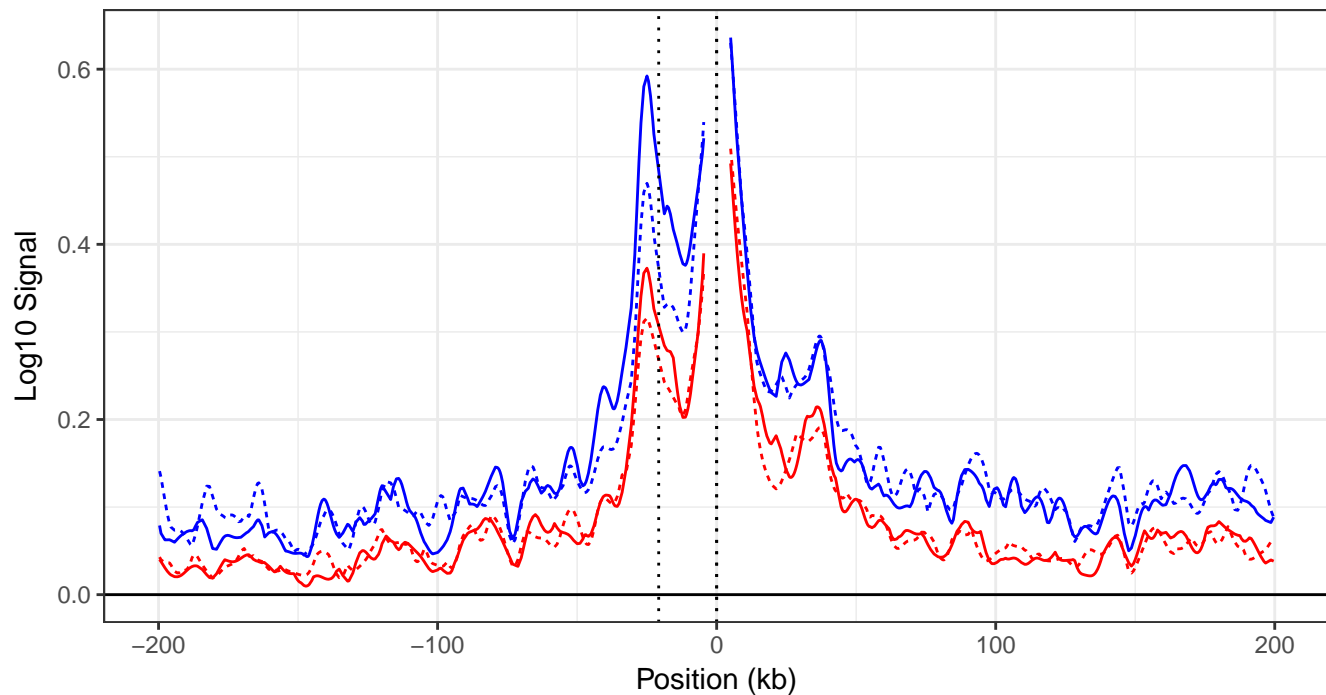
## Cry1 Around the Clock



time — ZTmean



### Max and min of 4C signal



time

Liver\_WT

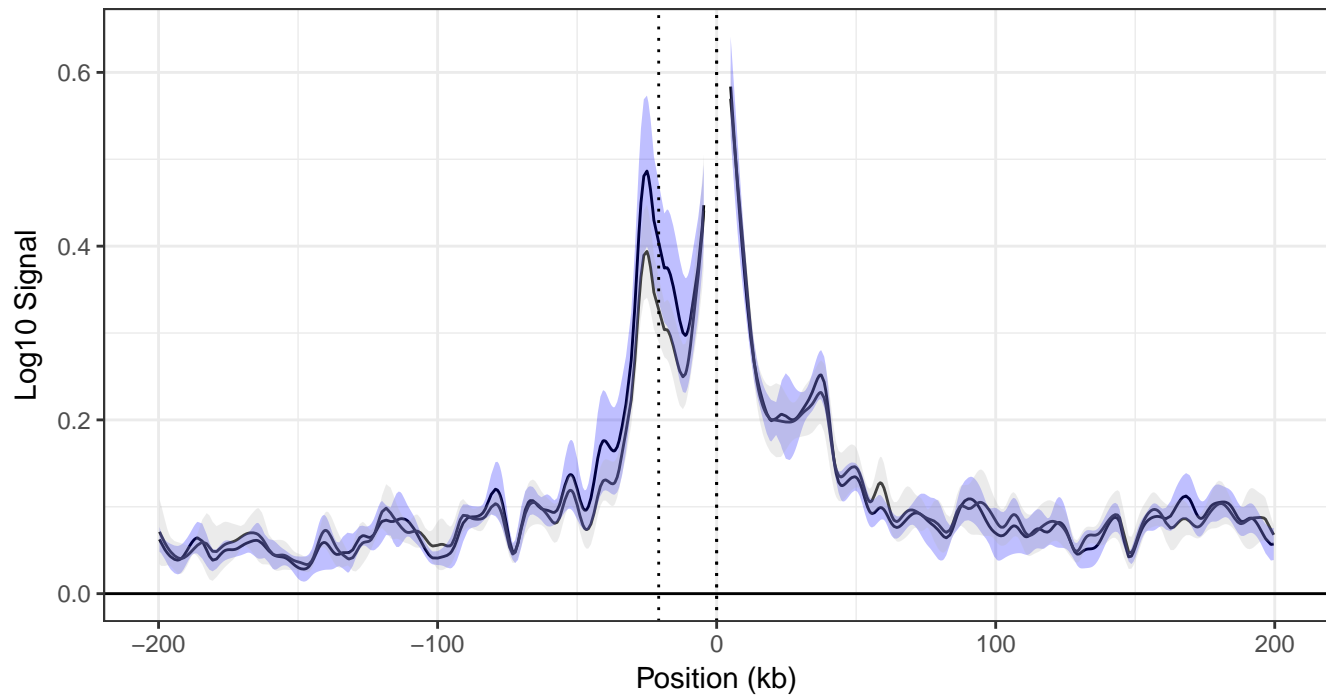
Liver\_Cry1IntronKO

genotype

— Liver\_WT

- - - Liver\_Cry1IntronKO

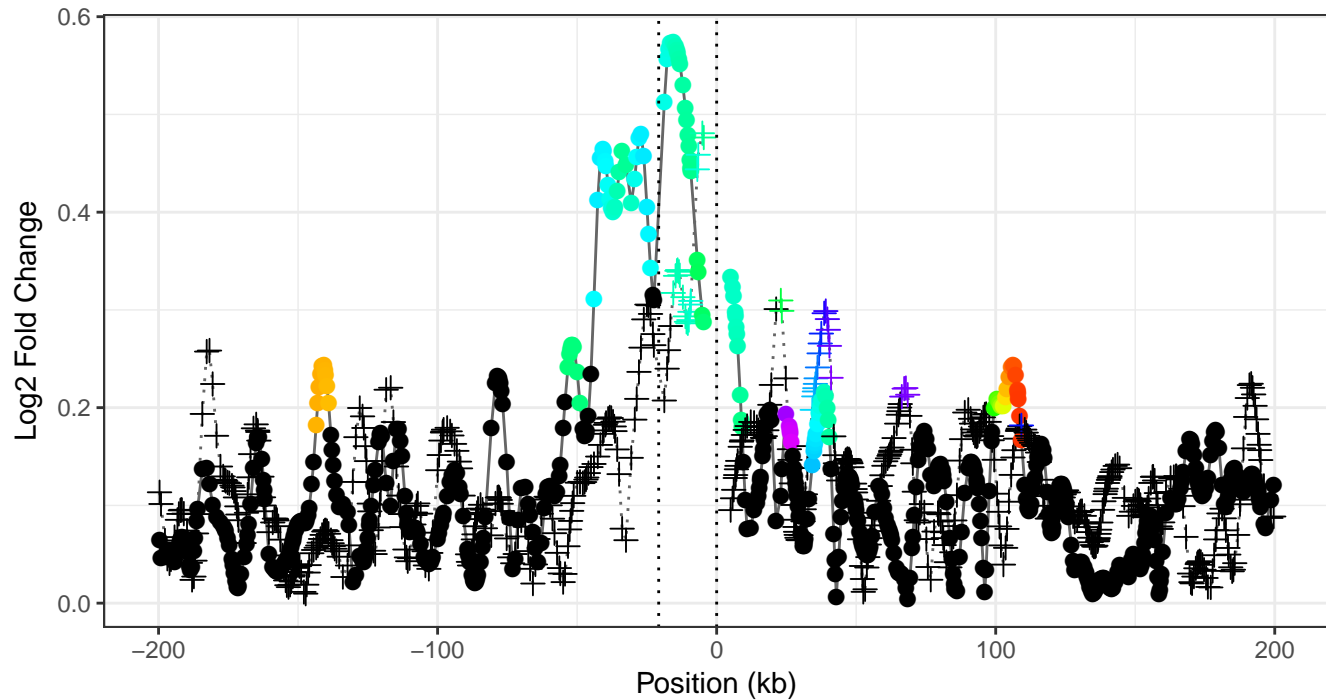
# Mean log10 4C signal



time — Liver\_WT — Liver\_Cry1IntronKO

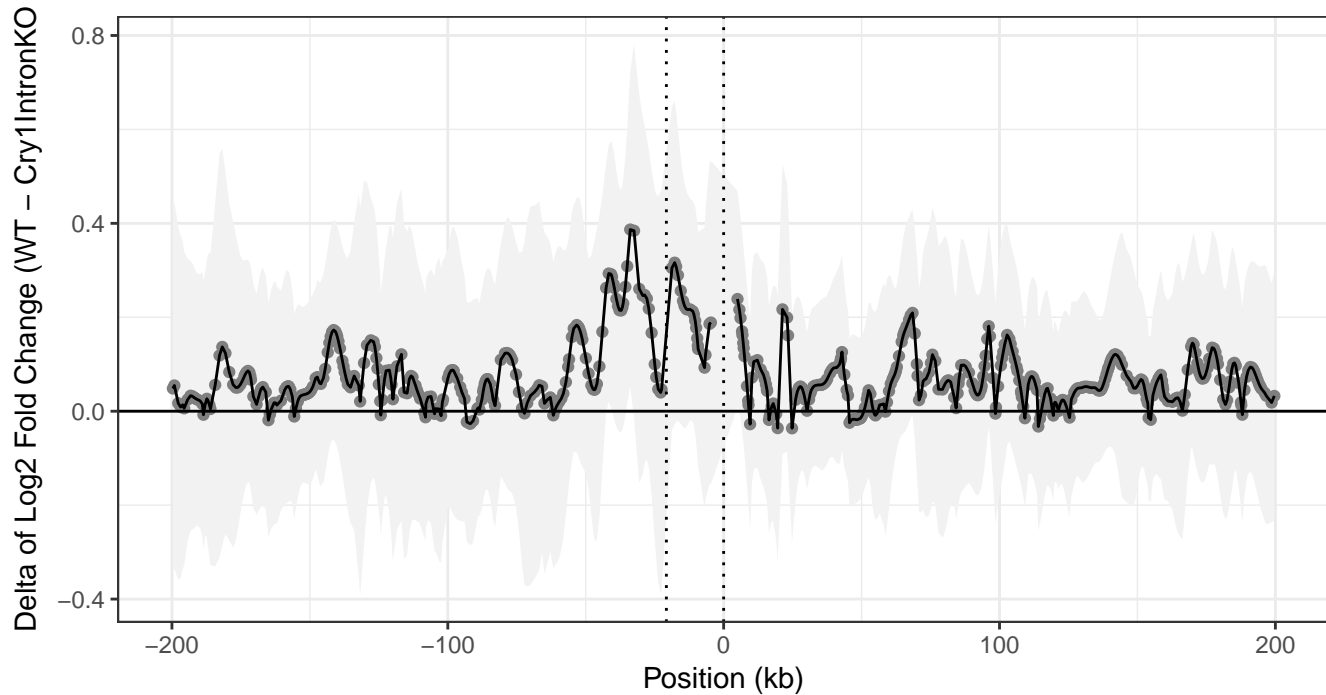
genotype ■ Liver\_WT ■ Liver\_Cry1IntronKO

# Amplitudes

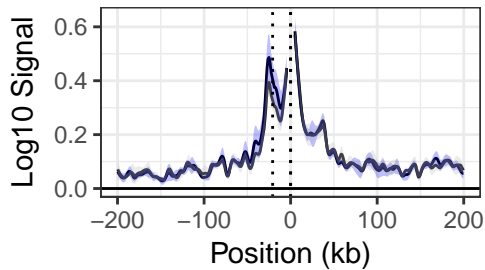


tissue ● Liver\_WT + Liver\_Cry1IntronKO

Delta of Amplitudes (WT – Cry1IntronKO)

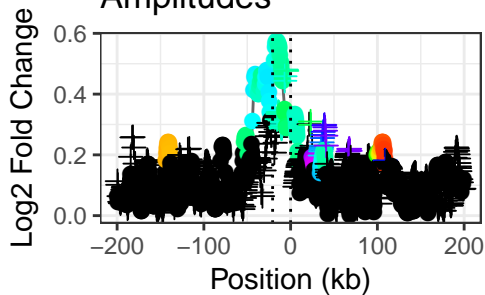


### Mean log10 4C signal



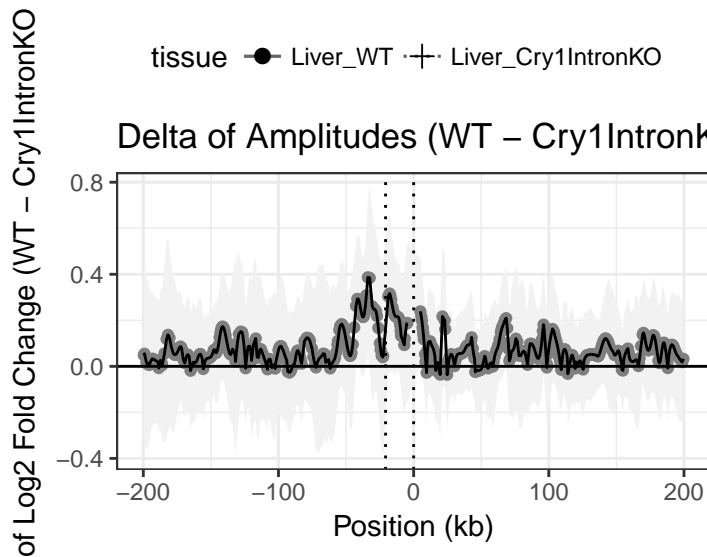
time — Liver\_WT — Liver\_Cry1IntronKO genotype ■ Liver\_WT ■ Liver\_Cry1IntronKO

### Amplitudes

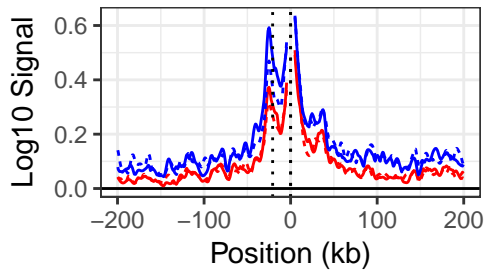


tissue ● Liver\_WT + Liver\_Cry1IntronKO

### Delta of Amplitudes (WT - Cry1IntronKO)

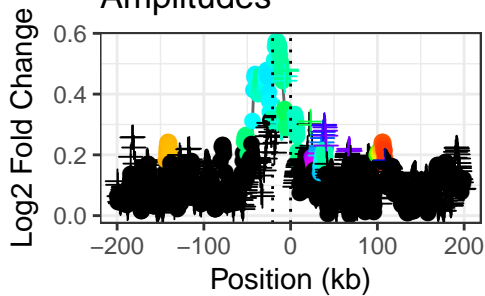


# Max and min of 4C signal



time      Liver\_WT      Liver\_Cry1IntronKO      genotype      — Liver\_WT      ··· Liver\_Cry1IntronKO

# Amplitudes



tissue      ● Liver\_WT      + Liver\_Cry1IntronKO

# Delta of Amplitudes (WT - Cry1IntronKO)

